

Roof Fans Range

Industrial ventilation



VENTILATION
AIR CONDITIONING
AIR CLEANING
HEATING



VORTICE

Air is life

We work to promote quality of life and a contribute to social evolution through eco-friendly products that move air safely and efficiently.



Our current Vortice Headquarters have been located in Tribiano (Milan) since 1972.



Founded in 1974, Vortice France is located at Créteil about 10 Km from Paris.

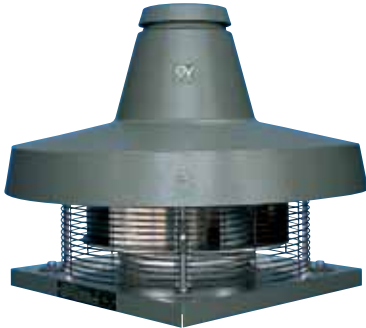


Founded in 1977, Vortice Limited is located at Burton on Trent in the East Midlands.

2010 - Our Moscow representative office was established
2011 - Our Shanghai representative office was established

Index

4 | TORRETTE TR E



Centrifugal roof fans
with horizontal discharge

6 | TORRETTE TR E-V



Centrifugal roof fans
with vertical discharge

8 | TORRETTE TR ED



Centrifugal roof fans
with horizontal discharge
for hot fumes extraction

10 | TORRETTE TR ED-V



Centrifugal roof fans
with vertical discharge
for hot fumes extraction

TORRETTE TR E



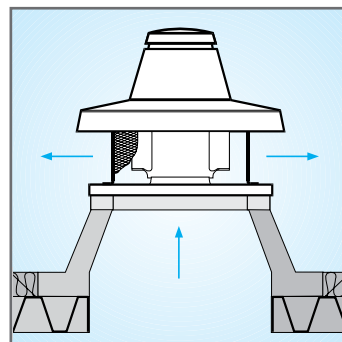
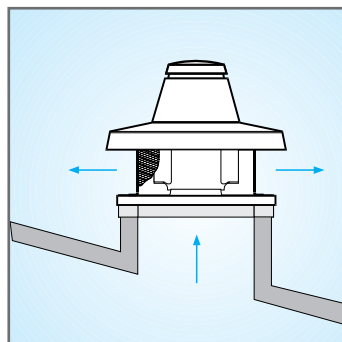
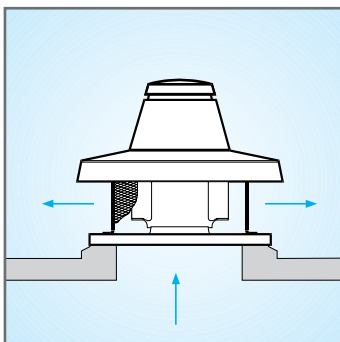
CENTRIFUGAL ROOF FANS WITH HORIZONTAL DISCHARGE

Product specifications

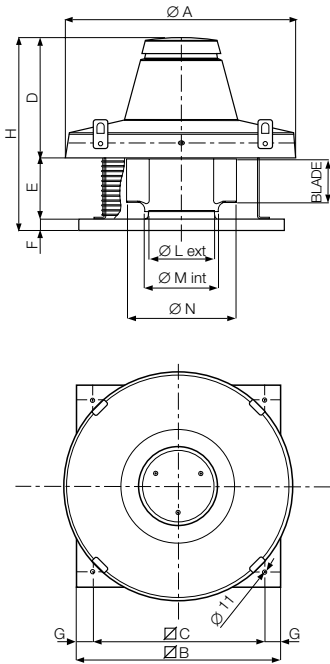
- 20 models.
- Delivery up to 18.000 m³/h.
- Asynchronous induction motor with protection rating IP55, standard size UNELMEC B5, self-ventilated, with rotor mounted on ball bearings.
- Galvanised steel sheet fan with self cleaning, backward curved blades, self-ventilating, die cast aluminium hub, clockwise rotation (intake view).
- Metal frame coated in corrosion-proof epoxy resin to assure long life and weather resistance.
- Aerodynamic suction nozzle in polyester painted steel sheet.
- All models fitted with steel bird guard.
- Single phase models can be controlled by an optional speed controller. Alternatively they can be controlled by means of optional inverters.
- Insulation class: Cl.I. ⊕

KEY FEATURES

- For installation in commercial and industrial environments, discos, offices, theatres, apartment buildings, gyms, restaurants, etc.
- To assure product safety over time, all models are fitted with a safety cable to anchor the machine to the support base.
- Easy to install on all types of roof.
- Secure using the eyebolt to facilitate lifting and transportation.
- For low dust, acid-free and non-corrosive air extraction only. Not suitable for installation on ducts located directly above fireplaces or burners.



DIMENSIONS



Models	Code	$\varnothing A$	$\varnothing B$	$\varnothing C$	D	E	F	G	H	$\varnothing L$	$\varnothing M$	$\varnothing N$
TRM 10 E 4P	15115	600	410	357	310	108	38	26.5	456	170	187.5	283
TRM 15 E 4P	15205	600	410	357	310	108	38	26.5	456	182	199	315
TRM 20 E 4P	15216	780	550	500	398	128	38	25	564	219	236.5	359
TRM 30 E 4P	15356	780	550	500	398	146	38	25	582	244	265.5	404
TRM 50 E 4P	15556	780	550	500	398	173	38	25	609	278	298	454
TRM 70 E 4P	15070	1015	830	750	449	283	38	40	770	328	335	504
TRT 10 E 4P	15155	600	410	357	310	108	38	26.5	456	170	187.5	283
TRT 15 E 4P	15255	600	410	357	310	108	38	26.5	456	182	199	315
TRT 20 E 4P	15215	780	550	500	398	128	38	25	564	219	236.5	359
TRT 30 E 4P	15355	780	550	500	398	146	38	25	582	244	265.5	404
TRT 50 E 4P	15555	780	550	500	398	173	38	25	609	278	298	454
TRT 70 E 4P	15071	1015	830	750	449	283	38	40	770	328	335	504
TRT 70 E 6P	15072	1015	830	750	449	283	38	40	770	365	375	564
TRT 100 E 4P	15073	1015	830	750	449	283	38	40	770	365	375	564
TRT 100 E 6P	15074	1165	980	900	605	383	38	40	1026	415	421	635
TRT 100 E 8P	15075	1165	980	900	605	383	38	40	1026	465	472	715
TRT 150 E 6P	15076	1165	980	900	605	383	38	40	1026	465	529	805
TRT 150 E 8P	15077	1165	980	900	605	383	38	40	1026	520	529	805
TRT 180 E 6P	15078	1165	980	900	605	383	38	40	1026	520	529	805
TRT 210 E 6P	15079	1165	980	900	605	383	38	40	1026	520	529	805

Dimensions (mm)

TECHNICAL DATA

	Models	Code	V ~ 50 Hz	W	A	Poles	RPM	Max Airflow		Max Pressure		Lp dB(A) 3m	Kg	Max °C	IP motor
								m³/h	l/s	mmH₂O	Pa				
SINGLE PHASE	TRM 10 E 4P	15115	230	100	0.50	4	1400	1100	306	22	216	56	14.5	90	55
	TRM 15 E 4P	15205		150	0.70		1400	1400	389	26	255	58.5	15	60	
	TRM 20 E 4P	15216		280	1.30		1415	2600	722	36	353	62	22	85	
	TRM 30 E 4P	15356		400	1.80		1425	3300	917	44	432	67	23	70	
	TRM 50 E 4P	15556		800	3.70		1480	4800	1333	55	540	72.5	28	80	
	TRM 70 E 4P	15070		1000	4.35		1415	6400	1778	67.5	662	77	79	90	
THREE PHASE	TRT 10 E 4P	15155	400	100	0.30	4	1400	1100	306	22	216	56	14.5	90	
	TRT 15 E 4P	15255		150	0.30		1400	1400	389	26	255	58.5	15	90	
	TRT 20 E 4P	15215		300	0.60		1400	2700	750	35	343	62	22	90	
	TRT 30 E 4P	15355		400	0.75		1400	3200	889	46	451	67	23	90	
	TRT 50 E 4P	15555		800	1.45		1400	4900	1361	61	598	72.5	28	90	
	TRT 70 E 4P	15071		950	1.85		1440	6400	1778	69	674	77	77	90	
	TRT 70 E 6P	15072		600	1.30	6	950	7000	1944	38	373	74	80	90	
	TRT 100 E 4P	15073		1900	3.25	4	1420	10000	2778	84.5	829	84	81	40	
	TRT 100 E 6P	15074		1100	2.30	6	950	10800	3000	48	471	77	117	85	
	TRT 100 E 8P	15075		930	2.10	8	715	11000	3056	34	334	71	127	80	
	TRT 150 E 6P	15076		1930	3.45	6	930	15000	4167	61	598	80	128	55	
	TRT 150 E 8P	15077		1600	3.10	8	715	15000	4167	45	441	74	132	75	
TRT 180 E 6P	15078	3100	5.95	6	970	16000	4444	79	775	83	130	60			
TRT 210 E 6P	15079	3400	6.40	6	980	18000	5000	79	775	84	132	50			

Conforms with ISO 3744 for noise and pressure levels. Operating temperature from -25 °C to +40±90 °C in continuous operation.

TORRETTE TR E-V



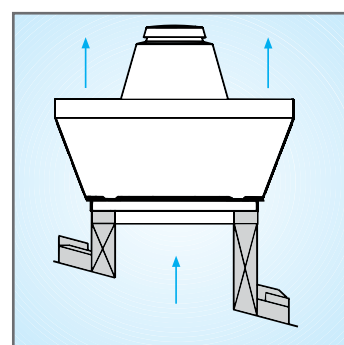
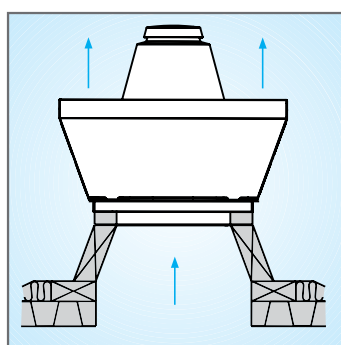
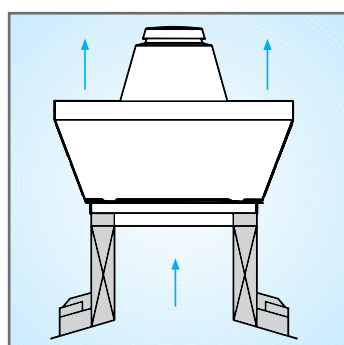
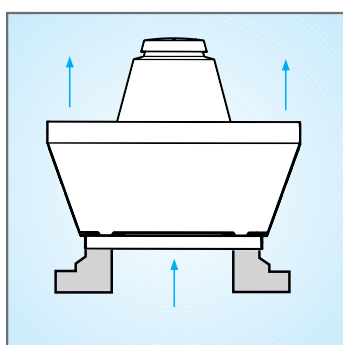
CENTRIFUGAL ROOF FANS WITH VERTICAL DISCHARGE

Product specifications

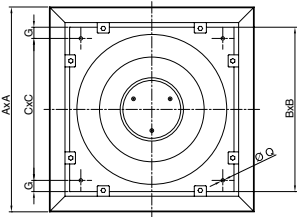
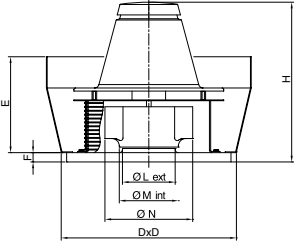
- 20 models.
- Vertical air extraction with polyester painted, galvanised steel reinforcements.
- Metal frame coated in corrosion-proof epoxy resin to assure long life and weather resistance.
- Aerodynamic suction nozzle in polyester painted steel sheet.
- All models fitted with steel bird guard.
- Asynchronous induction motor, insulation class F and with protection rating IP55, standard size UNELMEC B5, self-ventilated, with rotor mounted on ball bearings.
- Galvanised steel sheet fan with self cleaning, backward curved blades, self-ventilating, die cast aluminium hub, clockwise rotation (intake view).
- Single phase models can be controlled by an optional speed controller. Alternatively they can be controlled by means of optional inverters.
- Delivery up to 18.000 m³/h.
- Insulation class: Cl.I. ⚡

KEY FEATURES

- For installation in commercial and industrial environments, discos, offices, theatres, apartment buildings, gyms, restaurants, etc...
- To assure product safety over time, all models are fitted with a safety cable to anchor the machine to the support base.
- Easy to install on all types of roof.
- Secure using the eyebolt to facilitate lifting and transportation.
- For low dust, acid-free and non-corrosive air extraction only. Not suitable for installation on ducts located directly above fireplaces or burners.



DIMENSIONS



Models	Code	Ø A	Ø B	Ø C	D	E	F	G	H	Ø L	Ø M	Ø N	Ø Q
TRM 10 E-V 4P	15180	652	410	357	440	328	38	26.5	502	170	187.5	283	11
TRM 15 E-V 4P	15182	652	410	357	440	328	38	26.5	502	182	199	315	11
TRM 20 E-V 4P	15197	907	550	500	580	432	38	25	586	219	236.5	359	11
TRM 30 E-V 4P	15198	907	550	500	580	432	38	25	604	244	265.5	404	11
TRM 50 E-V 4P	15199	907	550	500	580	432	38	25	631	278	298	454	11
TRM 70 E-V 4P	15188	1144	830	750	860	491	38	40	723	328	375	564	12
TRT 10 E-V 4P	15181	652	410	357	440	328	38	26.5	502	170	187.5	283	11
TRT 15 E-V 4P	15183	652	410	357	440	328	38	26.5	502	182	199	315	11
TRT 20 E-V 4P	15184	907	550	500	580	432	38	25	586	219	236.5	359	11
TRT 30 E-V 4P	15185	907	550	500	580	432	38	25	604	244	265.5	404	11
TRT 50 E-V 4P	15186	907	550	500	580	432	38	25	631	278	298	454	11
TRT 70 E-V 4P	15187	1144	830	750	860	491	38	40	723	328	375	564	12
TRT 70 E-V 6P	15189	1144	830	750	860	491	38	40	723	365	375	564	12
TRT 100 E-V 4P	15190	1144	830	750	860	491	38	40	723	365	421	635	12
TRT 100 E-V 6P	15191	1462	980	900	1010	595	38	40	903	415	472	715	12
TRT 100 E-V 8P	15192	1462	980	900	1010	595	38	40	903	465	472	715	12
TRT 150 E-V 6P	15193	1462	980	900	1010	595	38	40	903	465	472	715	12
TRT 150 E-V 8P	15194	1462	980	900	1010	595	38	40	903	520	529	805	12
TRT 180 E-V 6P	15195	1462	980	900	1010	595	38	40	905	520	529	805	12
TRT 210 E-V 6P	15196	1462	980	900	1010	595	38	40	905	520	529	805	12

Dimensions (mm)

TECHNICAL DATA

	Models	Code	V ~ 50 Hz	W	A	Poles	RPM	Max Airflow		Max Pressure		Lp dB(A) 3m	Kg	Max °C	IP motor
								m³/h	l/s	mmH₂O	Pa				
SINGLE PHASE	TRM 10 E-V 4P	15180	230	100	0.50	4	1400	1100	306	22	216	56	23	90	55
	TRM 15 E-V 4P	15182		150	0.70		1400	1400	389	26	255	58.5	24	60	
	TRM 20 E-V 4P	15197		280	1.30		1415	2600	722	36	353	62	43	85	
	TRM 30 E-V 4P	15198		400	1.80		1425	3300	917	44	432	67	45	70	
	TRM 50 E-V 4P	15199		800	3.70		1480	4800	1333	55	540	72.5	51	80	
	TRM 70 E-V 4P	15188		1000	4.35		1415	6400	1778	67.5	662	77	105	90	
THREE PHASE	TRT 10 E-V 4P	15181	400	100	0.30	4	1400	1100	306	22	216	56	23	90	
	TRT 15 E-V 4P	15183		150	0.30		1400	1400	389	26	255	58.5	24	90	
	TRT 20 E-V 4P	15184		300	0.60		1400	2700	750	35	343	62	43	90	
	TRT 30 E-V 4P	15185		400	0.75		1400	3200	889	46	451	67	45	90	
	TRT 50 E-V 4P	15186		800	1.45		1400	4900	1361	61	598	72.5	51	90	
	TRT 70 E-V 4P	15187		950	1.85		1440	6400	1778	69	677	77	103	90	
	TRT 70 E-V 6P	15189		600	1.30	6	950	7000	1944	38	373	74	106	90	
	TRT 100 E-V 4P	15190		1900	3.25	4	1420	10000	2778	84.5	829	84	107	40	
	TRT 100 E-V 6P	15191		1100	2.30	6	950	10800	3000	48	471	77	191	85	
	TRT 100 E-V 8P	15192		930	2.10	8	715	11000	3056	34	334	71	171	80	
	TRT 150 E-V 6P	15193		1930	3.45	6	930	15000	4167	61	598	80	172	55	
	TRT 150 E-V 8P	15194		1600	3.10	8	715	15000	4167	45	441	74	176	75	
TRT 180 E-V 6P	15195	3100	5.95	6	970	16000	4444	79	775	83	130	60			
TRT 210 E-V 6P	15196	3400	6.40	6	980	18000	5000	79	775	84	132	50			

Conforms with ISO 3744 for noise and pressure levels. Operating temperature from -25 °C to +40±90 °C in continuous operation.

TORRETTE TR ED



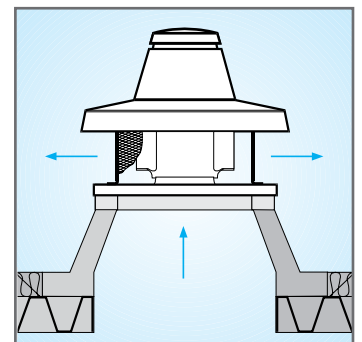
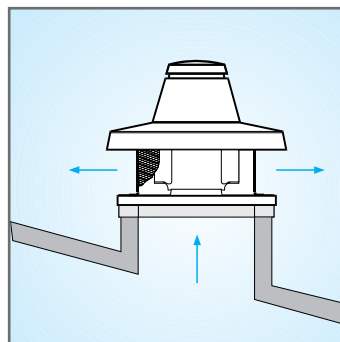
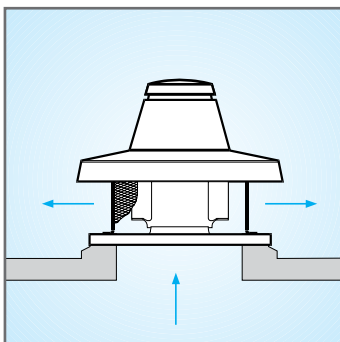
CENTRIFUGAL ROOF FANS WITH HORIZONTAL DISCHARGE FOR HOT FUMES EXTRACTION

Products specifications:

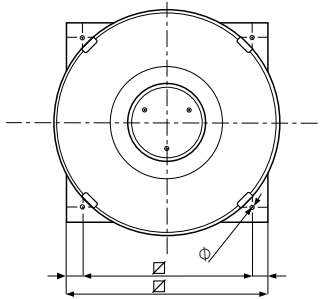
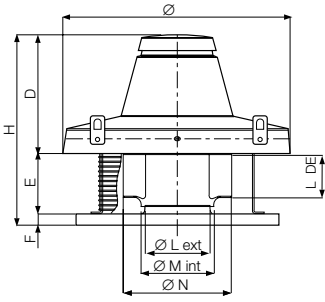
- 20 models.
- Motors insulation class H; IP55 protection.
- Asynchronous induction motors.
- UNELMEC B5 size, ball bearing mounted shafts.
- Galvanised steel sheet fan with self cleaning, backward curved blades, self-ventilating, die casted aluminium hub, clockwise rotation (intake view).
- All models fitted with steel bird guard.
- Streamlined cross-section intake port, made of polystyrene sheet steel painted.
- For long term safety each unit has a safety cable to anchor it to the base.
- Delivery: up to 18000 m³/h.
- Insulation class: Cl.I. ⚡

KEY FEATURES

- Easy to install on all types of roof.
For low dust, acid-free and non-corrosive air extraction only. Not suitable for installation in ducts located directly above fireplaces or burners.
- Engineered for 2 hours continuous extraction of fumes at 400 °C according to EN 12101-3.
- Three-phase modes 10-150: 2 speeds; minimum speed not available for hot fumes extraction.



DIMENSIONS



Models	Code	Ø A	Ø B	Ø C	D	E	F	G	H	Ø L	Ø M	Ø N
TRM 10 ED 4P	15039	600	410	357	309	166	38	26.5	513	183	187.5	280
TRM 15 ED 4P	150	600	410	357	309	166	38	26.5	513	206	187.5	280
TRM 20 ED 4P	15043	780	550	500	397	226	38	25	661	231	211	315
TRM 30 ED 4P	15046	780	550	500	397	226	38	25	661	260	211	315
TRM 50 ED 4P	15048	780	550	500	397	243	38	25	678	292	236.5	355
TRM 70 ED 4P	15080	1015	830	750	449	283	38	40	770	328	236.5	355
TRT 10 ED 4P	15040	600	410	357	309	166	38	26.5	513	183	265.5	400
TRT 15 ED 4P	15042	600	410	357	309	166	38	26.5	513	206	265.5	400
TRT 20 ED 4P	15045	780	550	500	397	226	38	25	661	231	298	450
TRT 30 ED 4P	15047	780	550	500	397	226	38	25	661	260	298	450
TRT 50 ED 4P	15049	780	550	500	397	243	38	25	678	292	335	504
TRT 70 ED 4P	15081	1015	830	750	449	283	38	40	770	328	335	504
TRT 70 ED 6P	15082	1015	830	750	449	283	38	40	770	365	375	562
TRT 100 ED 4P	15083	1015	830	750	449	283	38	40	770	365	375	562
TRT 100 ED 6P	15084	1165	980	900	605	383	38	40	1026	415	421	635
TRT 100 ED 8P	15085	1165	980	900	605	383	38	40	1026	465	472	715
TRT 150 ED 6P	15086	1165	980	900	605	383	38	40	1026	465	472	715
TRT 150 ED 8P	15087	1165	980	900	605	383	38	40	1026	520	529	805
TRT 180 ED 6P	15919	1165	980	900	605	383	38	40	1026	520	529	805
TRT 210 ED 6P	15920	1165	980	900	605	383	38	40	1026	520	529	805

Dimensions (mm)

TECHNICAL DATA

	Models	Code	V ~ 50 Hz	W min/max	A min/max	Poles	RPM min/max	Max Airflow		Max Pressure		Lp dB(A) 3m	Kg	Max °C	IP motor	
								m³/h min/max	l/s min/max	mmH₂O min/max	Pa min/max					
SINGLE PHASE	TRM 10 ED 4P	15039	220-240	110	0.46	4	1395	1000	278	20	196	56	18.5	400 °C /2H	55	
	TRM 15 ED 4P*	15041		140	0.6		1315	1400	389	24	235	58.5	19			
	TRM 20 ED 4P	15043		270	1.2		1375	2200	611	34	334	68	33			
	TRM 30 ED 4P	15046		420	1.9		1285	3100	861	40	392	67	35			
	TRM 50 ED 4P*	15048		720	3.3		1290	4500	1250	52	510	72.5	40			
	TRM 70 ED 4P*	15080		1020	4.5		1415	5800	1611	65	638	77	80			
THREE PHASE	TRT 10 ED 4P*	15040	380- 415	72 100	0.13 0.24	4	1270 1430	890 1100	247 306	17 21	167 206	56	18.5			
	TRT 15 ED 4P*	15042		93 130	0.16 0.27		1150 1400	1100 1400	306 389	16 24	157 235	58.5	19			
	TRT 20 ED 4P*	15045		208 270	0.32 0.53		1050 1400	1800 2200	500 611	24 34	235 334	68	33			
	TRT 30 ED 4P*	15047		305 420	0.48 0.75		1070 1400	2555 3100	710 861	30 43	294 422	67	35			
	TRT 50 ED 4P*	15049		530 690	0.8 1.2		1150 1400	3800 4500	1056 1250	38 52	373 510	72.5	40			
	TRT 70 ED 4P	15081		820 1090	1.5 2.0		1150 1400	5300 6000	1472 1667	52 67	510 657	77	78			
	TRT 70 ED 6P*	15082		420 580	0.8 1.3		6	750 950	5300 6000	1472 1667	30 38	294 373	74			81
	TRT 100 ED 4P*	15083		1400 1950	2.3 4.9		4	1200 1400	8300 9100	2306 2528	72 84	706 824	84			81.5
	TRT 100 ED 6P*	15084		900 1130	1.4 2.4		6	730 950	7550 8600	2097 2389	38 47	373 461	77			114
	TRT 100 ED 8P*	15085		600 860	1.2 2.0		8	570 715	8200 9200	2278 2556	28 34	275 334	71			124
	TRT 150 ED 6P*	15086		1280 1930	2.4 3.4		6	700 930	11000 12800	3056 3556	42 59	412 579	80			125
	TRT 150 ED 8P*	15087		1000 1510	2.0 3.0		8	610 715	11600 13500	3222 3750	34 42	334 412	74			129
TRT 180 ED 6P**	15919	3200	6.11	6	950	16500	4583	79	775	83	220					
TRT 210 ED 6P**	15920	3460	6.42	6	950	18000	5000	80	785	84	222					

* Certified by TUV according to EN 12101-3

** Certified by LGAI (Applus) according to EN 12101-3

TORRETTE TR ED-V



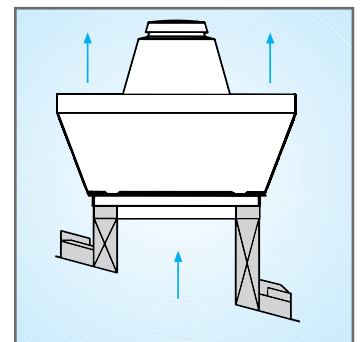
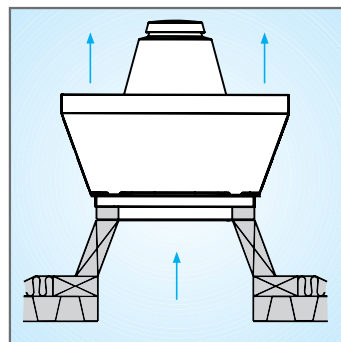
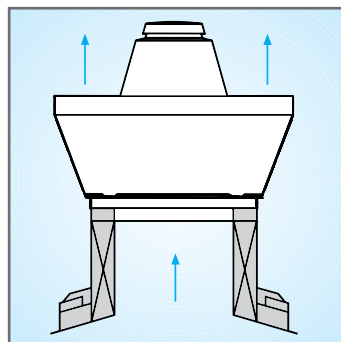
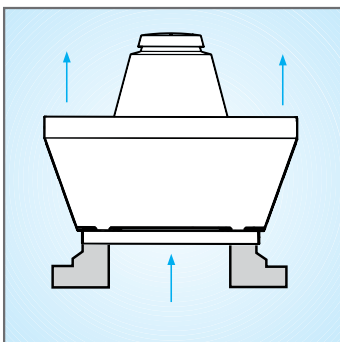
CENTRIFUGAL ROOF FANS WITH VERTICAL DISCHARGE FOR HOT FUMES EXTRACTION

Products specifications:

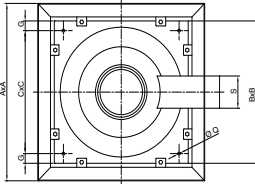
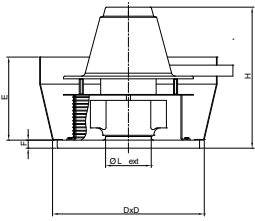
- 20 models.
- Motor insulation class H; IP55 protection.
- Asynchronous induction motors, thermally protected, standard UNELMEC B5 size, ball bearing mounted shafts.
- Galvanised steel sheet fan with self cleaning, backward curved blades, self-ventilating, die casted aluminium hub, clockwise rotation (intake view).
- All models fitted with steel bird guard.
- Streamlined cross-section intake port, made of polyester sheet steel painted.
- For long term safety each unit has a safety cable to anchor it to the base.
- Delivery: up to 18000 m³/h.
- Insulation class: Cl.I. ☹

KEY FEATURES

- Easy to install on all types of roof.
For low dust, acid-free and non-corrosive air extraction only. Not suitable for installation in ducts located directly above fireplaces or burners.
- Engineered for 2 hours continuous extraction of fumes at 400 °C according to EN 12101-3.
- Three-phase modes 10-150: 2 speeds; minimum speed not available for hot fumes extraction.



DIMENSIONS



Models	Code	Ø A	Ø B	Ø C	D	E	F	G	H	Ø L	Ø M	Ø N	Ø Q	S
TRM 10 ED-V 4P	15160	652	410	357	440	328	38	26.5	538	183	187.5	284	11	120
TRT 10 ED-V 4P	15161	652	410	357	440	328	38	26.5	538	183	187.5	284	11	120
TRM 15 ED-V 4P	15162	652	410	357	440	328	38	26.5	538	206	211	319	11	120
TRT 15 ED-V 4P	15163	652	410	357	440	328	38	26.5	538	206	211	319	11	120
TRM 20 ED-V 4P	15164	907	550	500	580	432	38	25	653	231	236.5	359	11	120
TRT 20 ED-V 4P	15165	907	550	500	580	432	38	25	653	231	236.5	359	11	120
TRM 30 ED-V 4P	15166	907	550	500	580	432	38	25	653	260	236.5	404	11	120
TRT 30 ED-V 4P	15167	907	550	500	580	432	38	25	653	260	236.5	404	11	120
TRM 50 ED-V 4P	15168	907	550	500	580	432	38	25	669	292	298	454	11	120
TRT 50 ED-V 4P	15169	907	550	500	580	432	38	25	669	292	298	454	11	120
TRM 70 ED-V 4P	15170	1144	830	750	860	491	38	40	743	328	335	504	12	160
TRT 70 ED-V 4P	15171	1144	830	750	860	491	38	40	743	328	335	504	12	160
TRT 70 ED-V 6P	15172	1144	830	750	860	491	38	40	743	365	375	564	12	160
TRT 100 ED-V 4P	15173	1144	830	750	860	491	38	40	743	365	375	564	12	160
TRT 100 ED-V 6P	15174	1462	980	900	1010	595	38	40	923	415	421	635	12	160
TRT 100 ED-V 8P	15175	1462	980	900	1010	595	38	40	923	465	472	715	12	160
TRT 150 ED-V 6P	15176	1462	980	900	1010	595	38	40	923	465	472	715	12	160
TRT 150 ED-V 8P	15177	1462	980	900	1010	595	38	40	923	520	529	805	12	160
TRT 180 ED-V 6P	15178	1462	980	900	1010	595	38	40	923	520	529	805	12	160
TRT 210 ED-V 6P	15179	1462	980	900	1010	595	38	40	923	520	529	805	12	160

Dimensions (mm)

TECHNICAL DATA

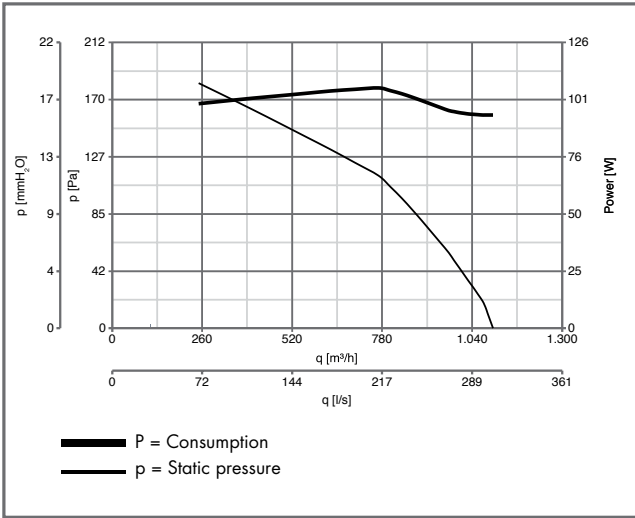
	Models	Code	V ~ 50 Hz	W min/max	A min/max	Poles	RPM min/max	Max Airflow		Max Pressure		Lp dB(A) 3m	Kg	Max °C	IP motor	
								m³/h min/max	l/s min/max	mmH ₂ O min/max	Pa min/max					
SINGLE PHASE	TRM 10 ED-V 4P**	15160	230	100	0.45	4	1450	1000	278	20	196	56	32	400 °C /2H	55	
	TRM 15 ED-V 4P**	15162		130	0.57		1400	1400	389	24	235	58.5	33			
	TRM 20 ED-V 4P**	15164		250	1.20		1400	2200	611	34	334	68	33			
	TRM 30 ED-V 4P**	15166		410	1.75		1380	3100	861	40	392	67	33			
	TRM 50 ED-V 4P**	15168		720	3.30		1350	4500	1250	52	510	72.5	61			
	TRM 70 ED-V 4P**	15170		1000	4.35		1350	5800	1611	65	638	77	61			
THREE PHASE	TRT 10 ED-V 4P**	15161	400	75 100	0.15 0.25	4	1250 1450	890 1100	247 306	17 21	167 206	56	63			
	TRT 15 ED-V 4P**	15163		85 125	0.15 0.27		1100 1400	1100 1400	306 389	16 24	157 235	58.5	63			
	TRT 20 ED-V 4P**	15165		200 250	0.35 0.50		1100 1420	1800 2200	500 611	24 34	235 334	68	68			
	TRT 30 ED-V 4P**	15167		300 410	0.50 0.70		1100 1380	2550 3100	500 861	30 43	294 422	67	68			
	TRT 50 ED-V 4P**	15169		550 710	0.90 1.25		1100 1380	3800 4500	1056 1250	38 52	373 510	72.5	130			
	TRT 70 ED-V 4P**	15171		900 1100	1.50 2.00		1200 1400	5300 6000	1472 1667	52 67	510 657	77	128			
	TRT 70 ED-V 6P**	15172		450 620	0.90 1.30		6	760 940	5300 6000	1472 1667	30 38	294 373	74			131
	TRT 100 ED-V 4P**	15173		1400 1870	2.40 4.50		4	1180 1400	8300 9100	2306 2528	72 84	706 824	84			132
	TRT 100 ED-V 6P**	15174		800 1110	1.60 2.30		6	760 940	7550 8600	2097 2389	38 47	373 461	71			207
	TRT 100 ED-V 8P**	15175		700 810	1.30 2.00		8	610 720	8200 9200	2278 2556	28 34	275 334	71			217
	TRT 150 ED-V 6P**	15176		1470 1880	2.45 3.45		6	710 920	11100 12800	3056 3556	42 59	412 579	80			218
	TRT 150 ED-V 8P**	15177		1170 1450	2.15 2.95		8	540 720	11600 13500	3222 3750	34 42	334 412	74			222
TRT 180 ED-V 6P**	15178	3200	6.11	6	950	16500	4583	79	775	83	220					
TRT 210 ED-V 6P**	15179	3460	6.42	6	950	18000	5000	80	785	84	222					

** Certified by LGAI (Applus) according to EN 12101-3

PERFORMANCE CURVES

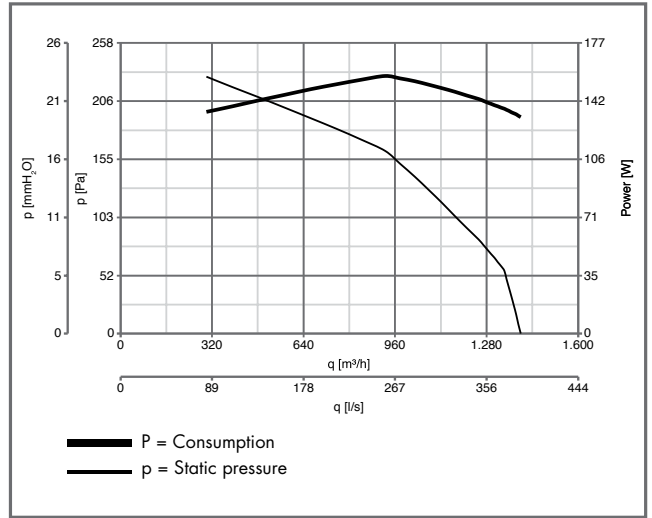
CODE 15115-15180

TORRETTE TRM 10 E-EV 4P



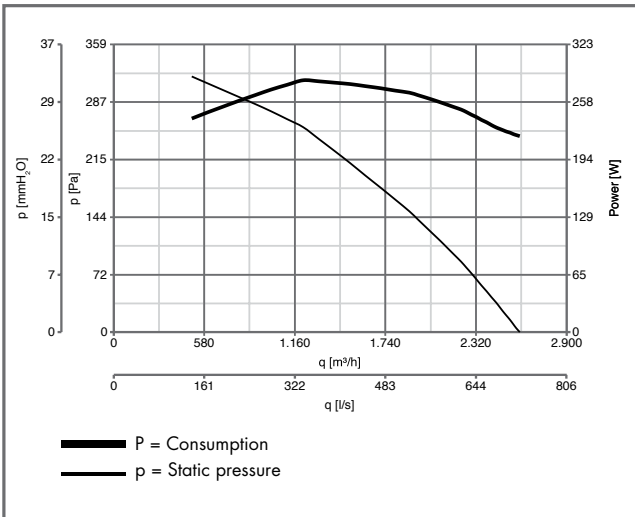
CODE 15205-15182

TORRETTE TRM 15 E-EV 4P



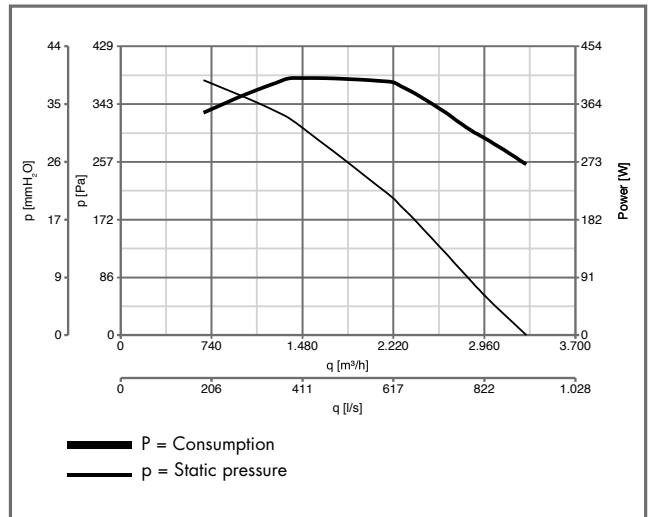
CODE 15216-15197

TORRETTE TRM 20 E-EV 4P



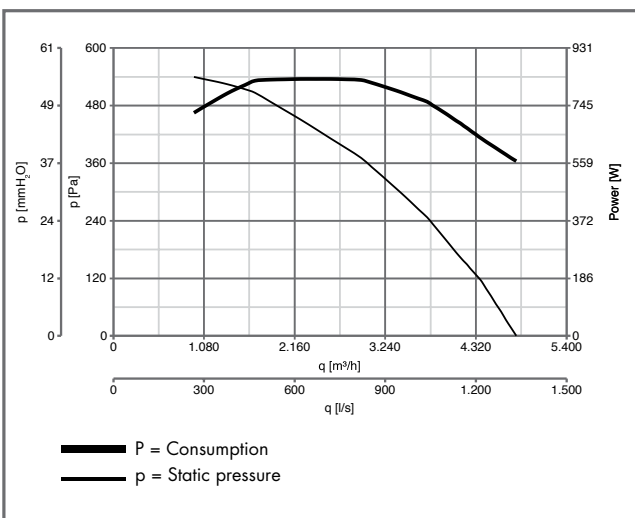
CODE 15356-15198

TORRETTE TRM 30 E-EV 4P



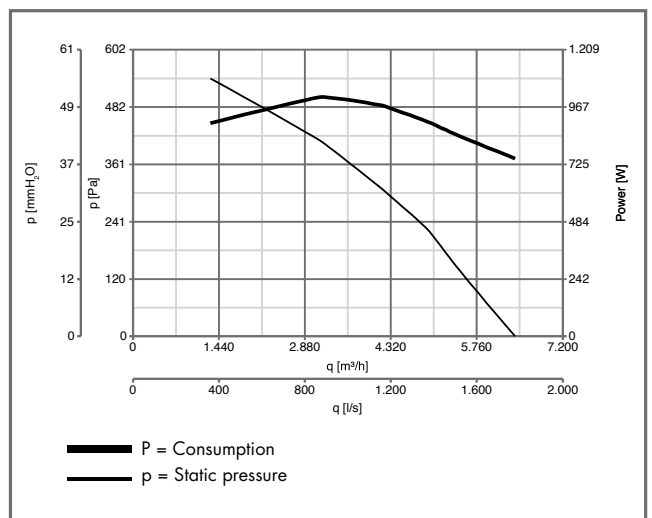
CODE 15556-15199

TORRETTE TRM 50 E-EV 4P



CODE 15070-15188

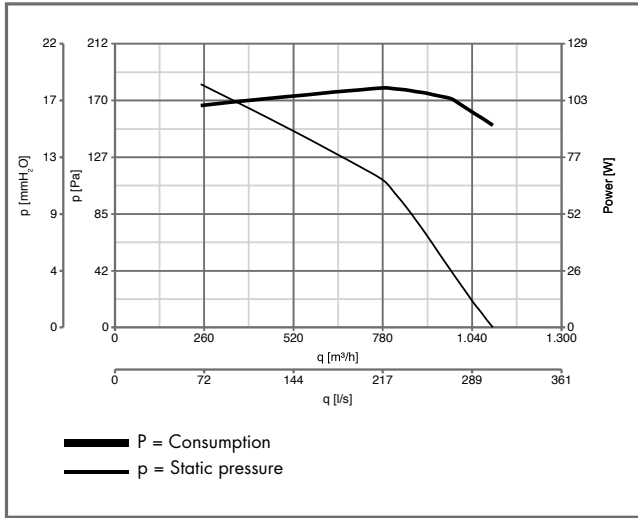
TORRETTE TRM 70 E-EV 4P



PERFORMANCE CURVES

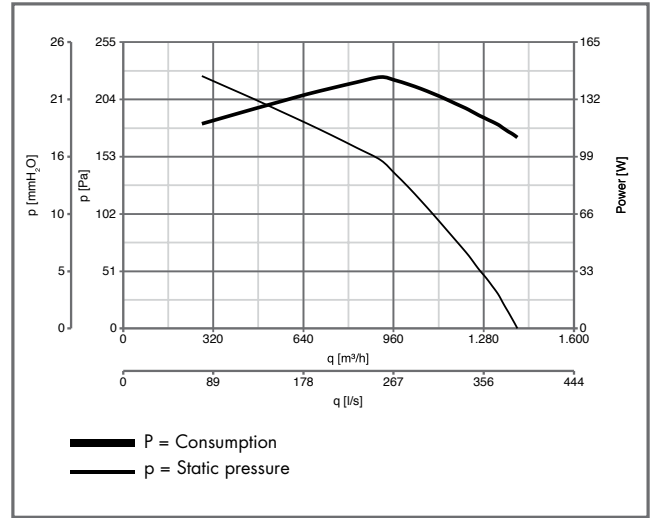
CODE 15155-15181

TORRETTE TRT 10 E-EV 4P



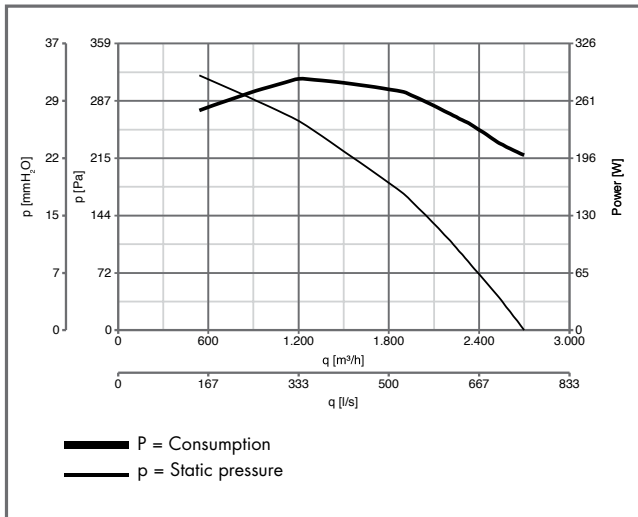
CODE 15255-15183

TORRETTE TRT 15 E-EV 4P



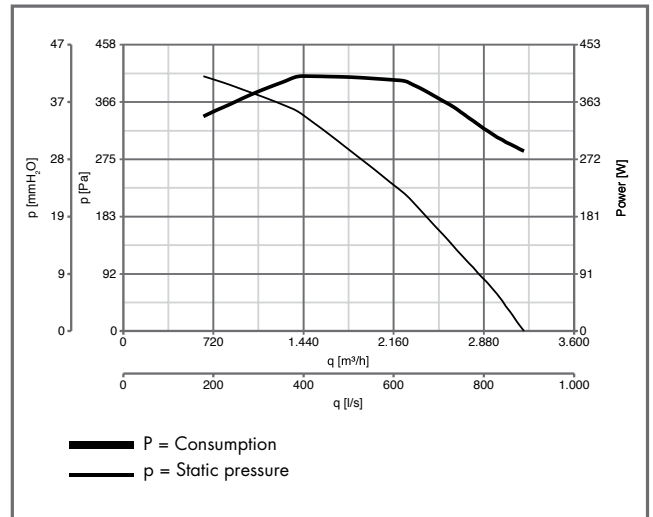
CODE 15215-15184

TORRETTE TRT 20 E-EV 4P



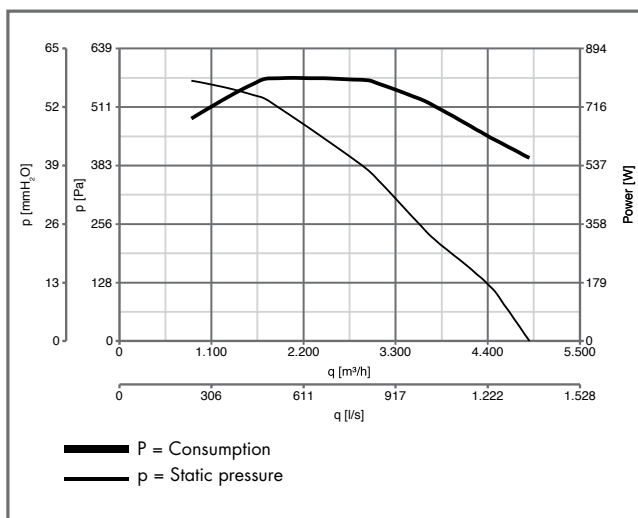
CODE 15355-15185

TORRETTE TRT 30 E-EV 4P



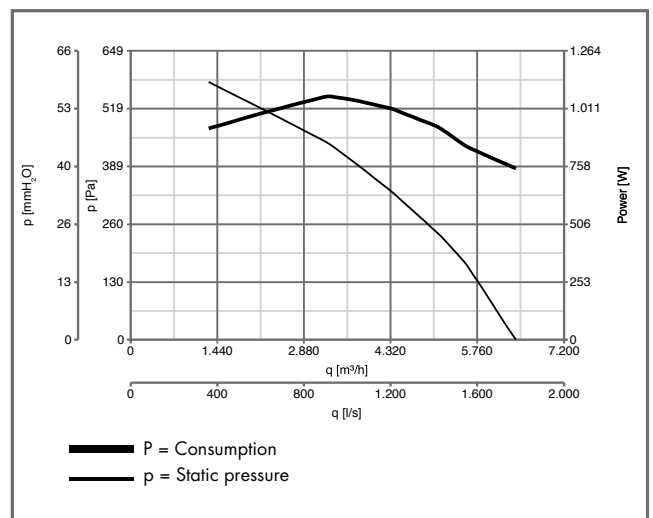
CODE 15555-15186

TORRETTE TRT 50 E-EV 4P



CODE 15071-15187

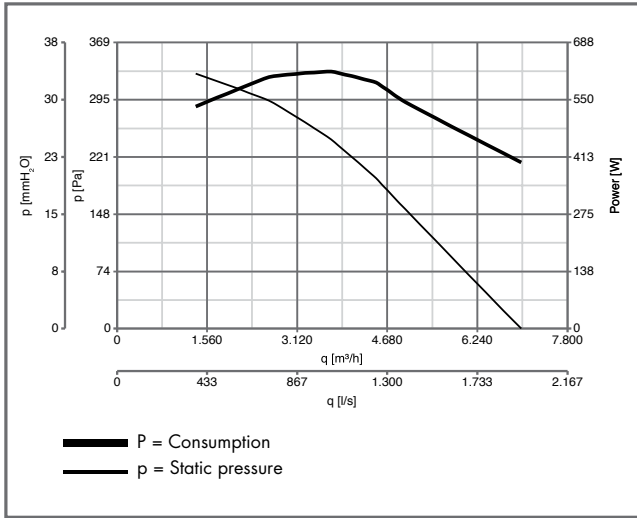
TORRETTE TRT 70 E-EV 4P



PERFORMANCE CURVES

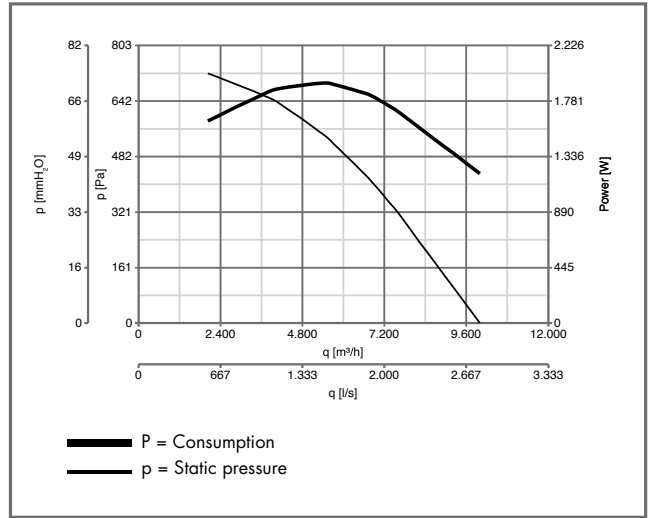
CODE 15072-15189

TORRETTE TRT 70 E-EV 6P



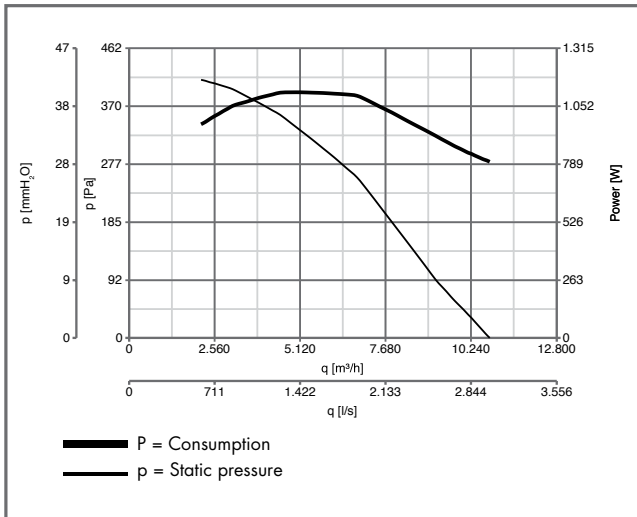
CODE 15073-15190

TORRETTE TRT 100 E-EV 4P



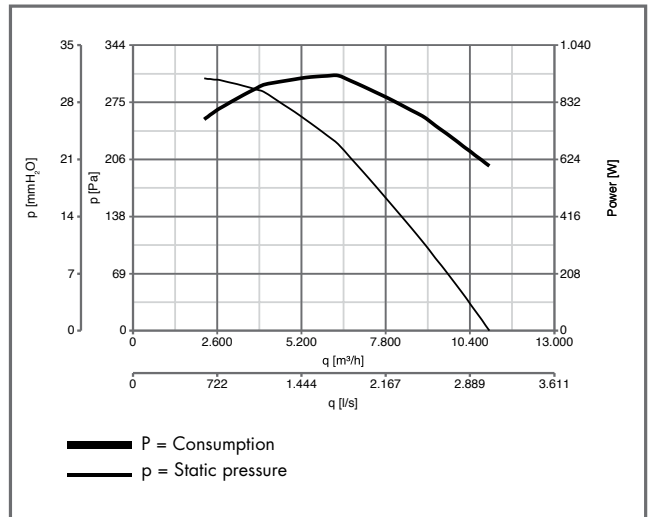
CODE 15074-15191

TORRETTE TRT 100 E-EV 6P



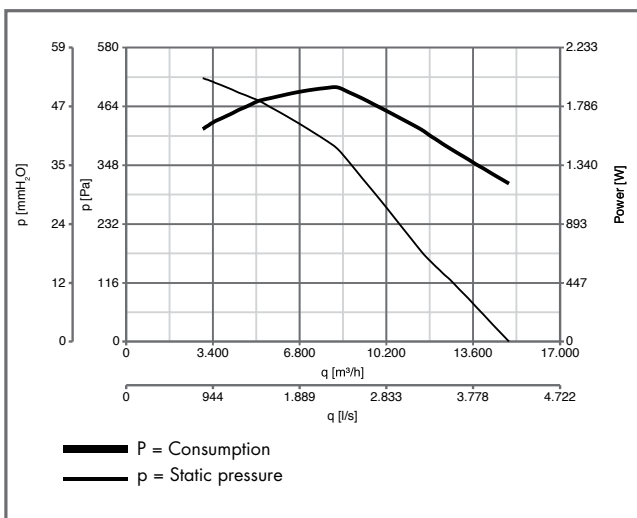
CODE 15075-15192

TORRETTE TRT 100 E-EV 8P



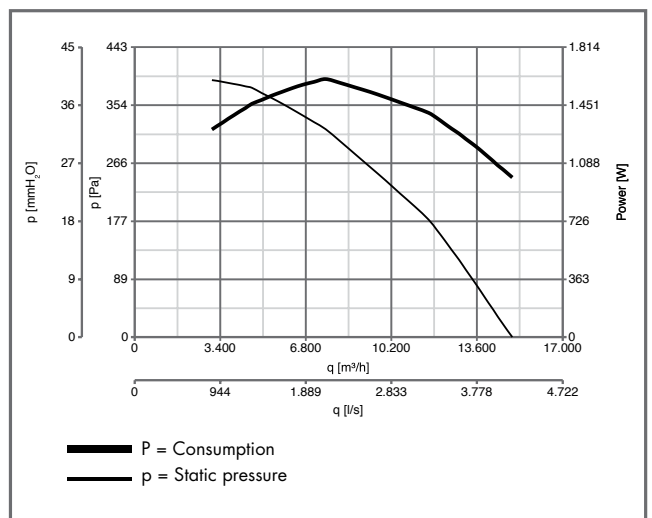
CODE 15076-15193

TORRETTE TRT 150 E-EV 6P



CODE 15077-15194

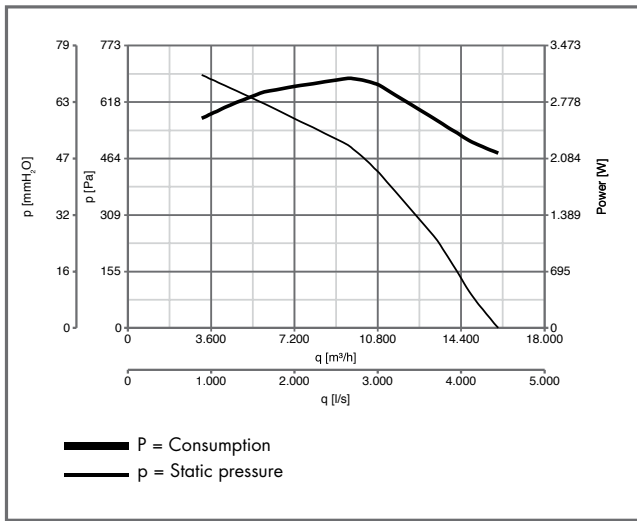
TORRETTE TRT 150 E-EV 8P



PERFORMANCE CURVES

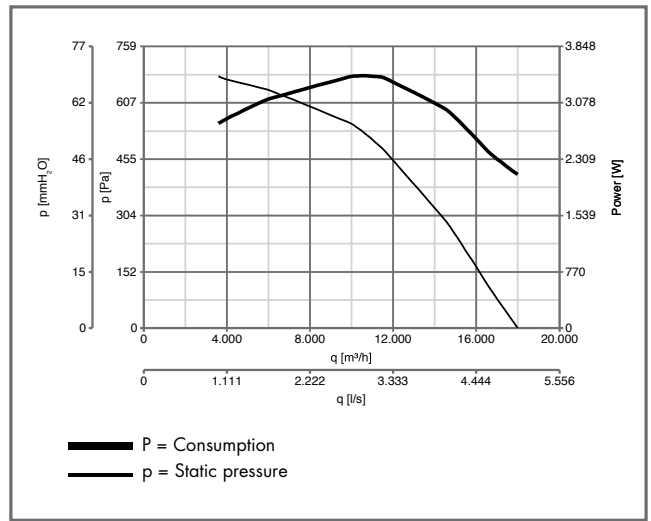
CODE 15078-15195

TORRETTE TRT 180 E-EV 6P



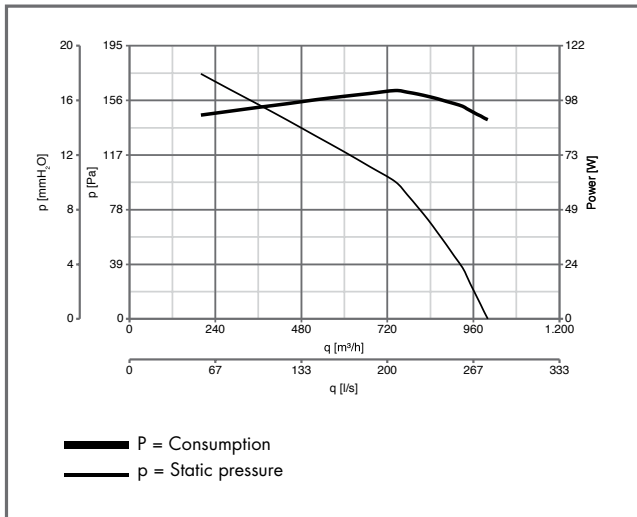
CODE 15079-15196

TORRETTE TRT 210 E-EV 6P



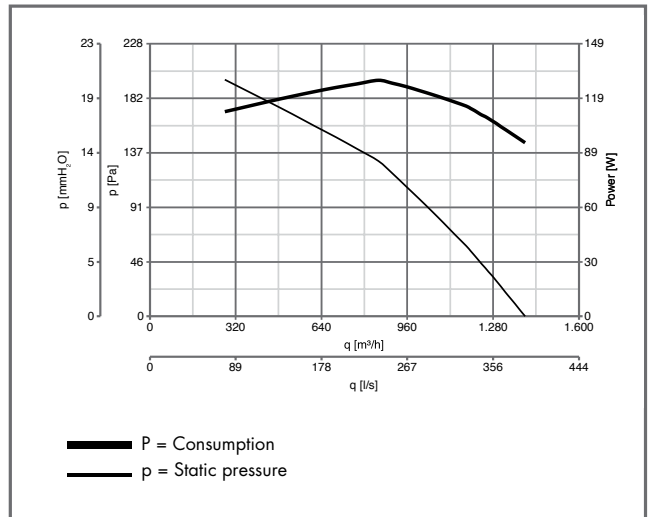
CODE 15039

TORRETTE TRM 10 ED 4P



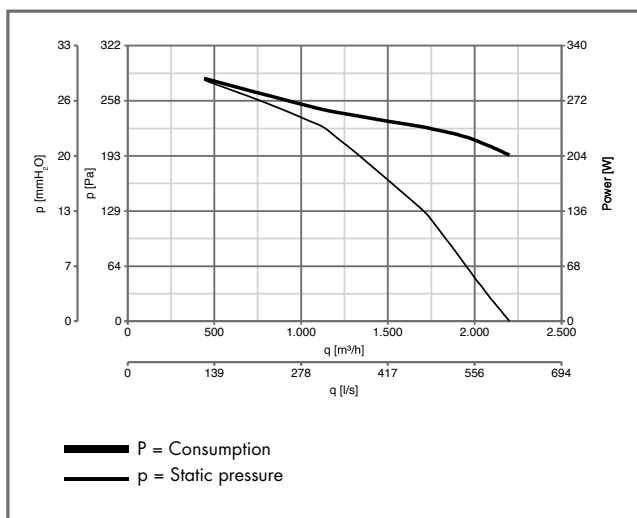
CODE 15041

TORRETTE TRM 15 ED 4P



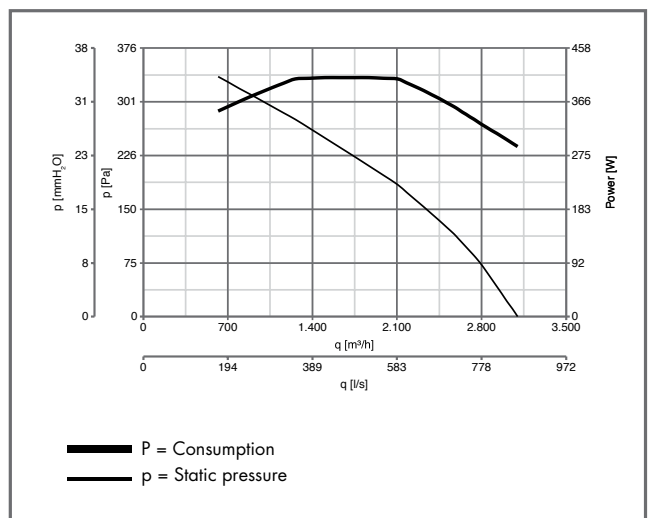
CODE 15043

TORRETTE TRM 20 ED 4P



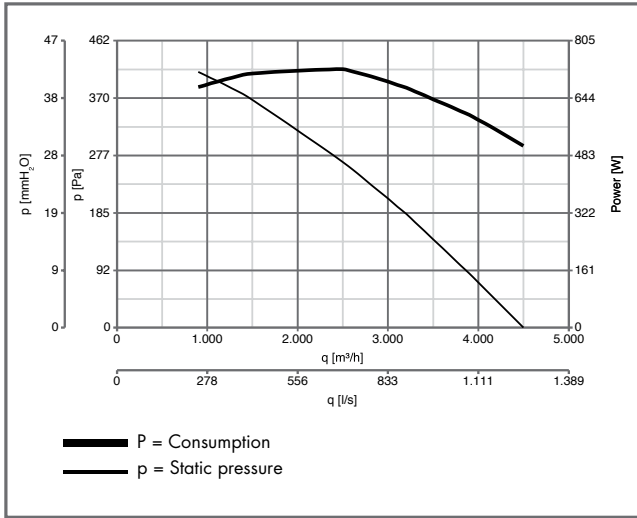
CODE 15046

TORRETTE TRM 30 ED 4P

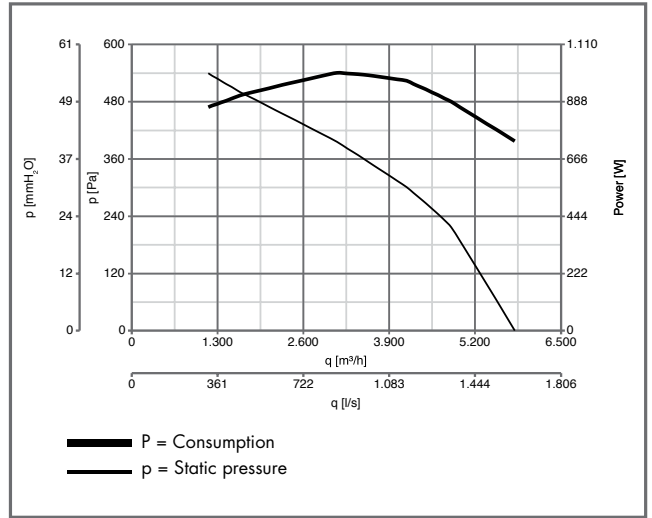


PERFORMANCE CURVES

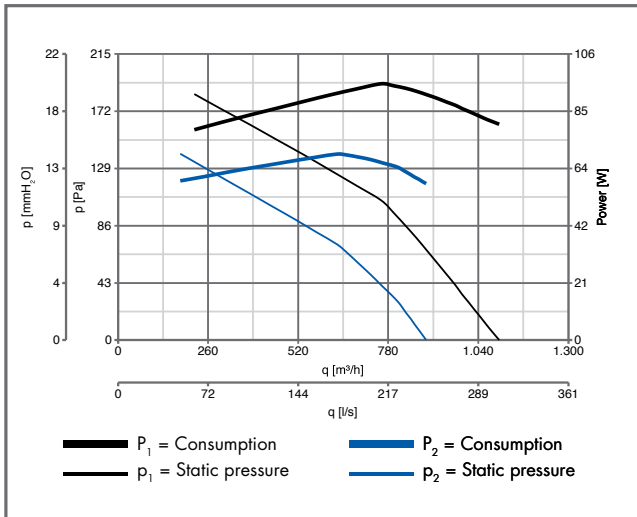
CODE 15048 TORRETTE TRM 50 ED 4P



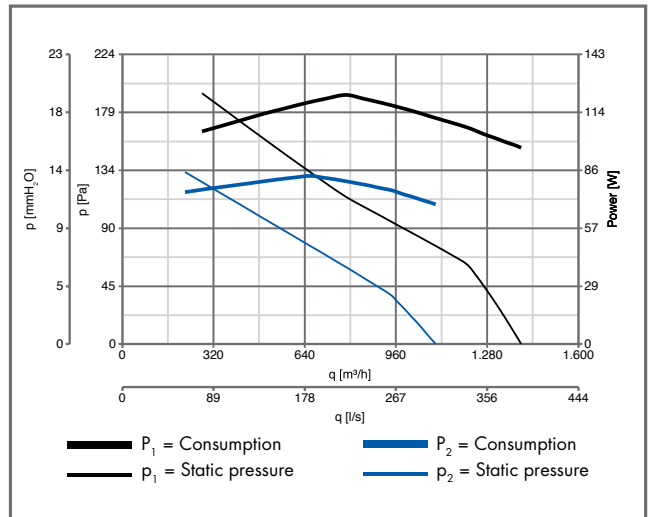
CODE 15080 TORRETTE TRM 70 ED 4P



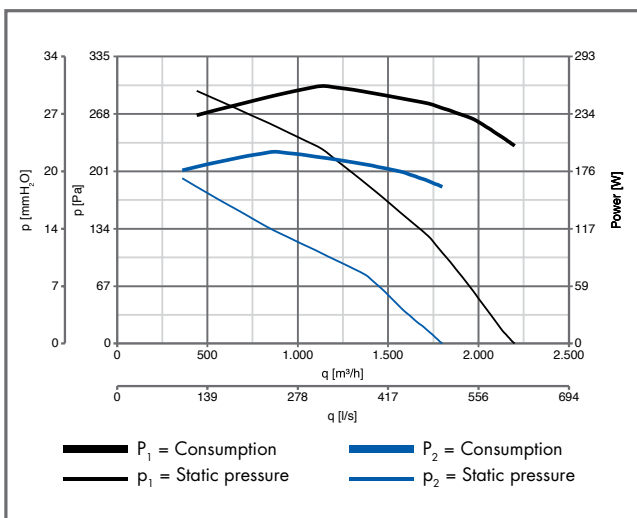
CODE 15040 TORRETTE TRT 10 ED 4P



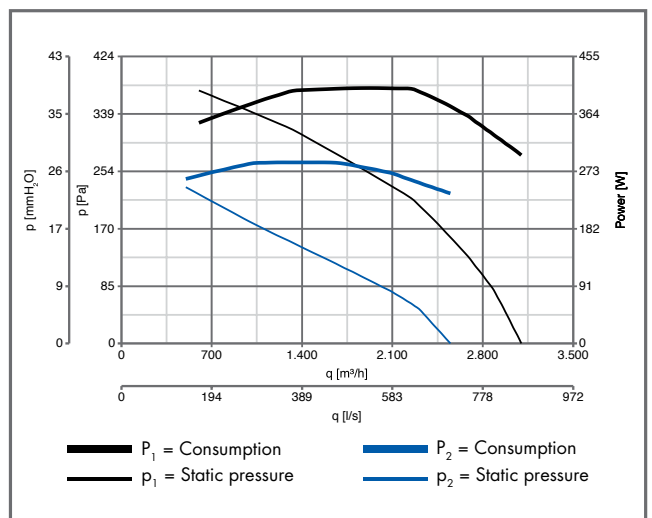
CODE 15042 TORRETTE TRT 15 ED 4P



CODE 15045 TORRETTE TRT 20 ED 4P



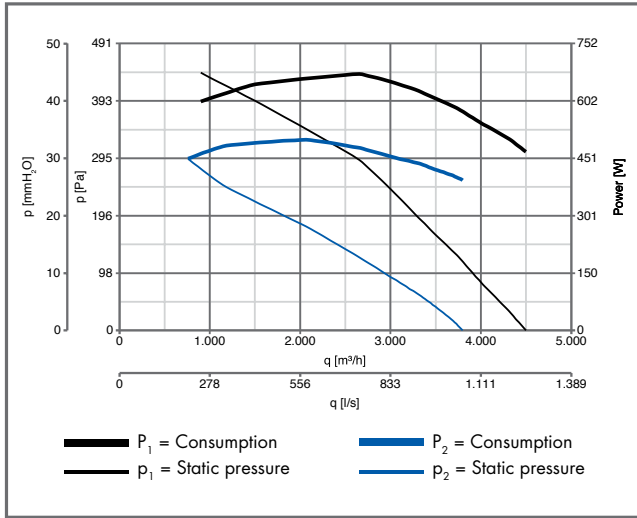
CODE 15047 TORRETTE TRT 30 ED 4P



PERFORMANCE CURVES

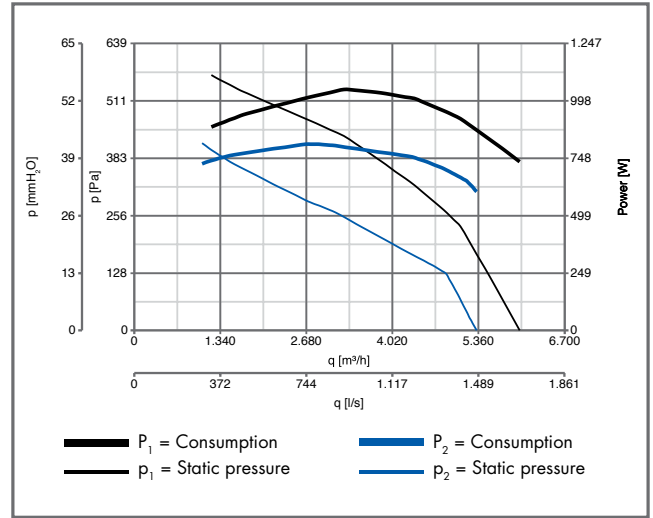
CODE 15049

TORRETTE TRT 50 ED 4P



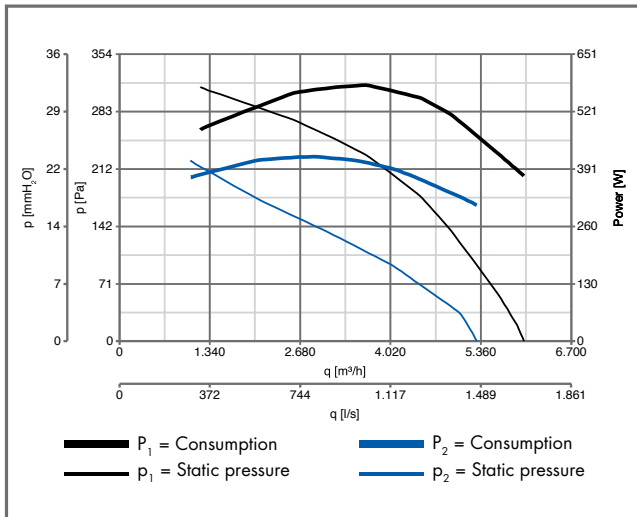
CODE 15081

TORRETTE TRT 70 ED 4P



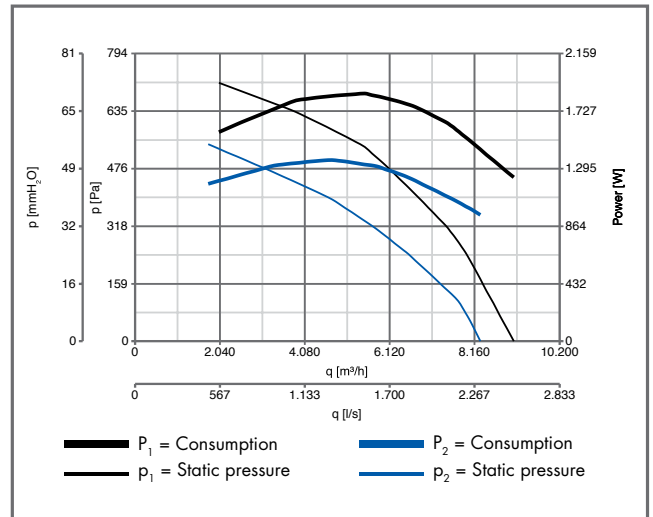
CODE 15082

TORRETTE TRT 70 ED 6P



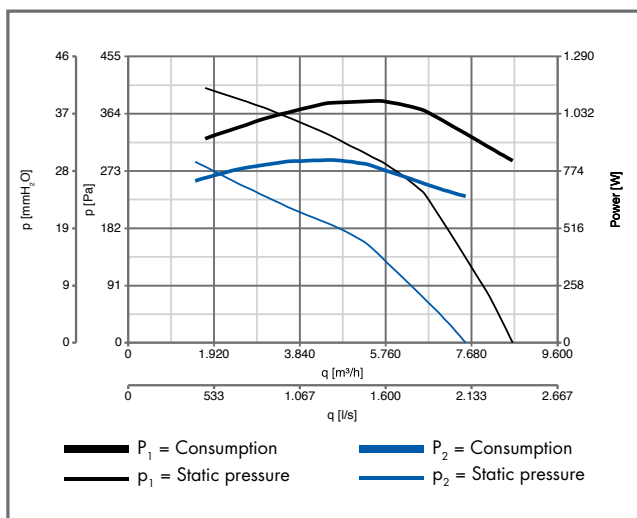
CODE 15083

TORRETTE TRT 100 ED 4P



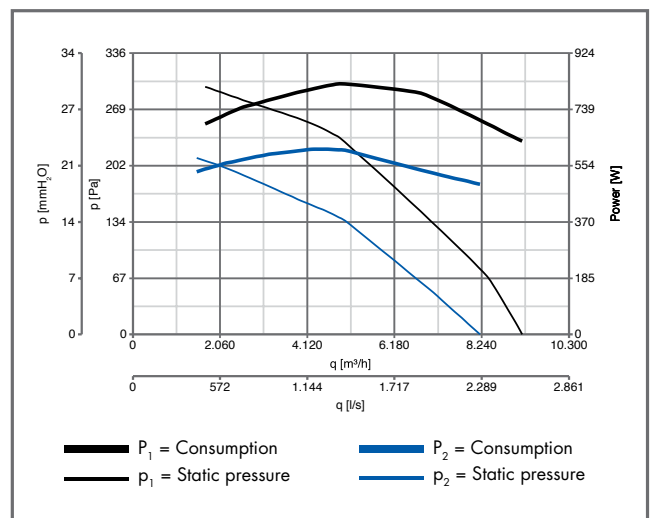
CODE 15084

TORRETTE TRT 100 ED 6P



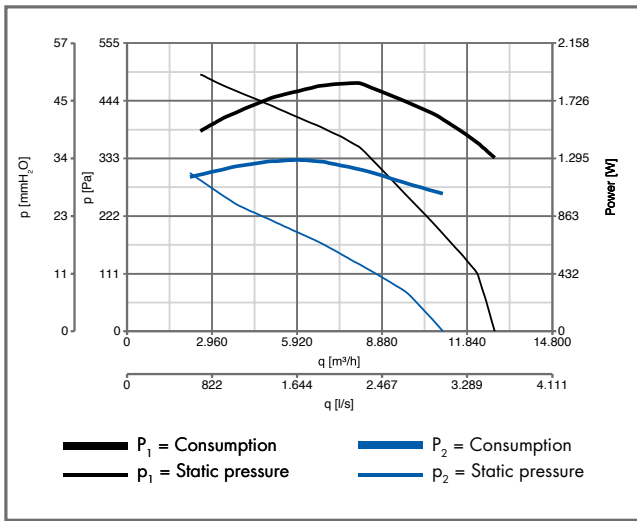
CODE 15085

TORRETTE TRT 100 ED 8P

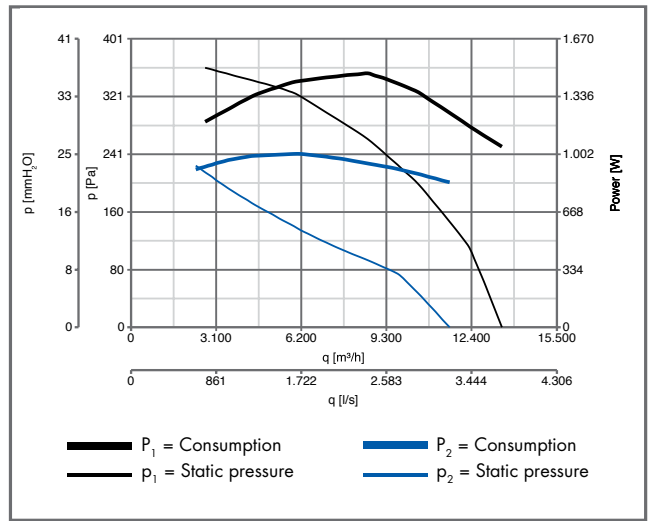


PERFORMANCE CURVES

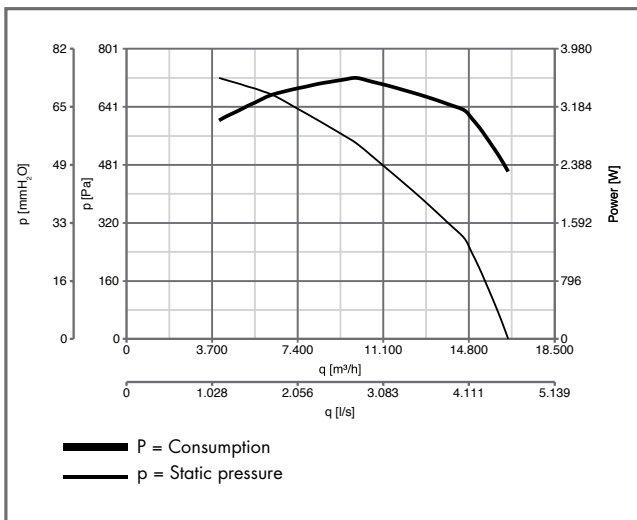
CODE 15086 TORRETTE TRT 150 ED 6P



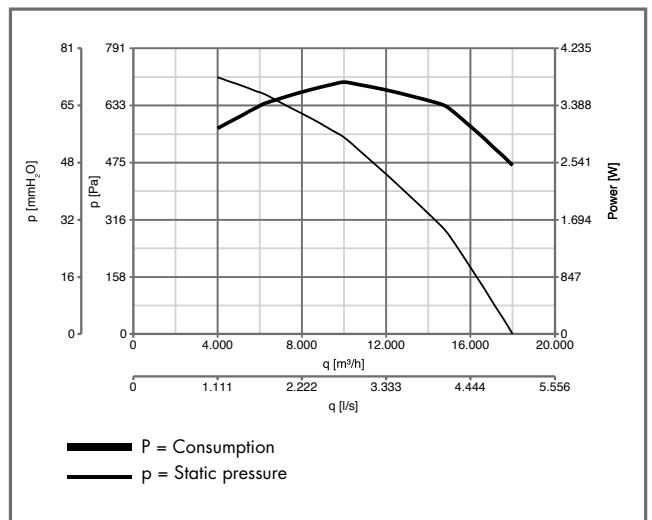
CODE 15087 TORRETTE TRT 150 ED 8P



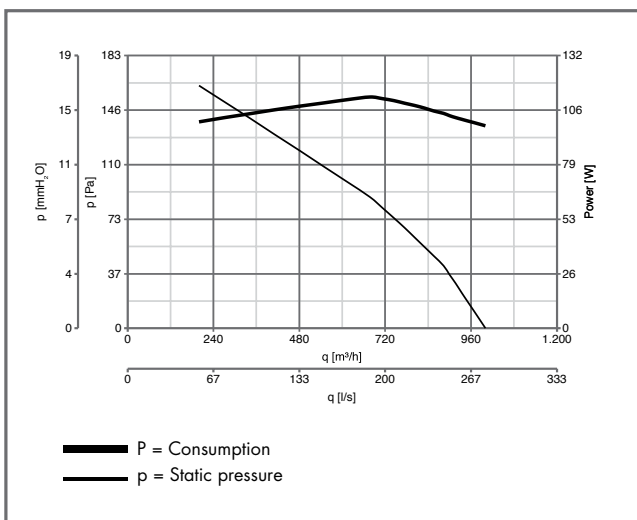
CODE 15919 TORRETTE TRT 180 ED 6P



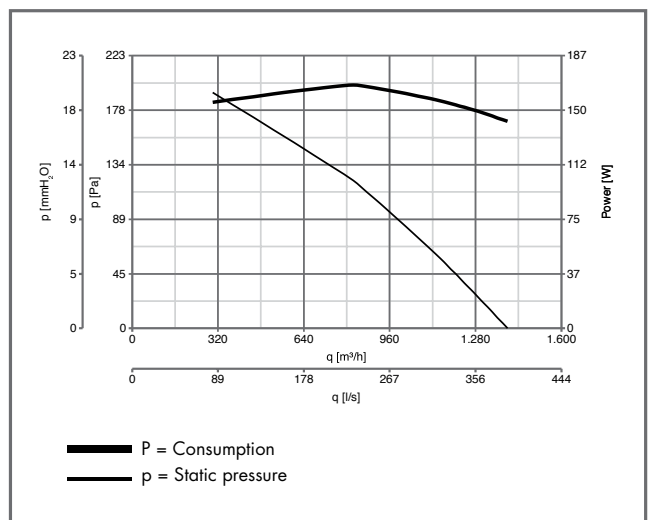
CODE 15920 TORRETTE TRT 210 ED 6P



CODE 15160 TORRETTE TRM 10 ED-V 4P



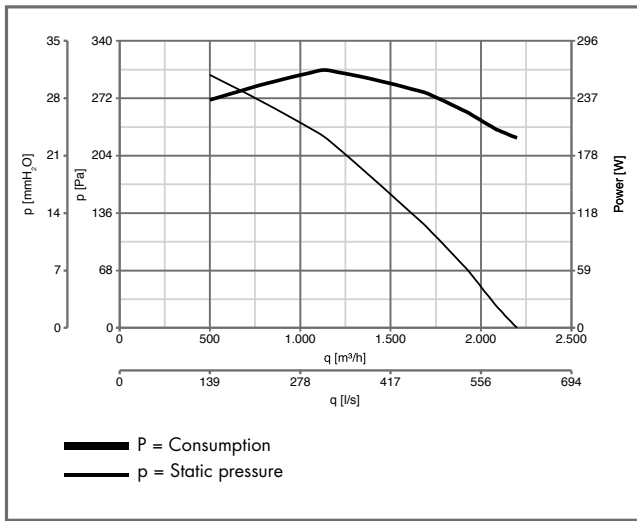
CODE 15162 TORRETTE TRM 15 ED-V 4P



PERFORMANCE CURVES

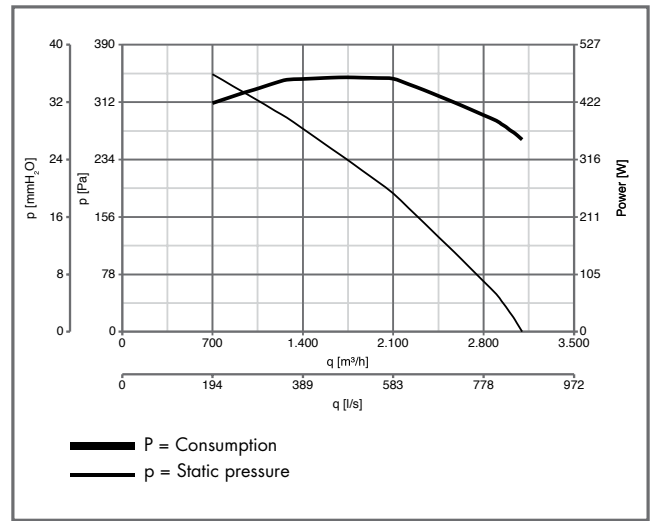
CODE 15164

TORRETTE TRM 20 ED-V 4P



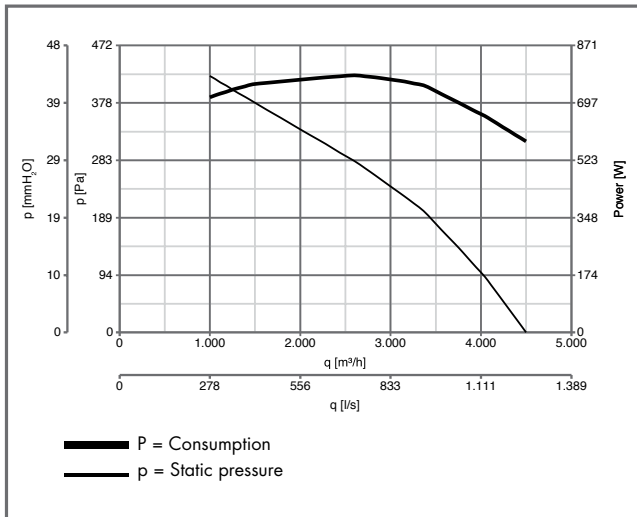
CODE 15166

TORRETTE TRM 30 ED-V 4P



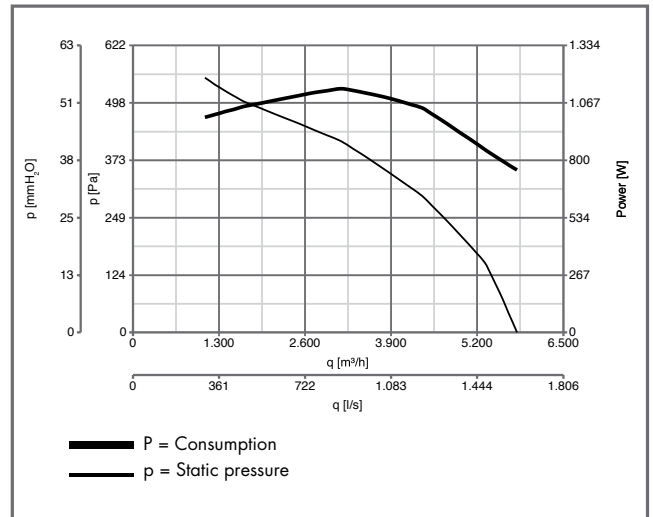
CODE 15168

TORRETTE TRM 50 ED-V 4P



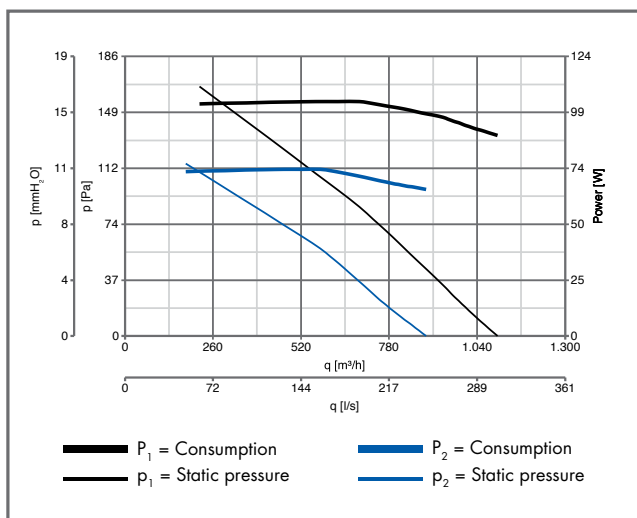
CODE 15170

TORRETTE TRM 70 ED-V 4P



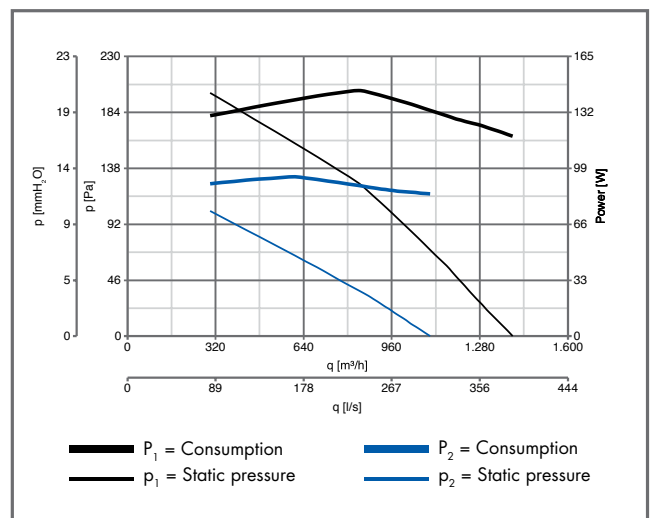
CODE 15161

TORRETTE TRT 10 ED-V 4P



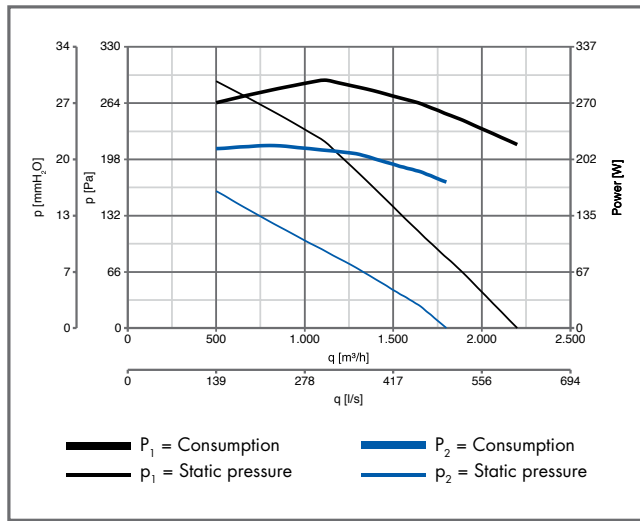
CODE 15163

TORRETTE TRT 15 ED-V 4P

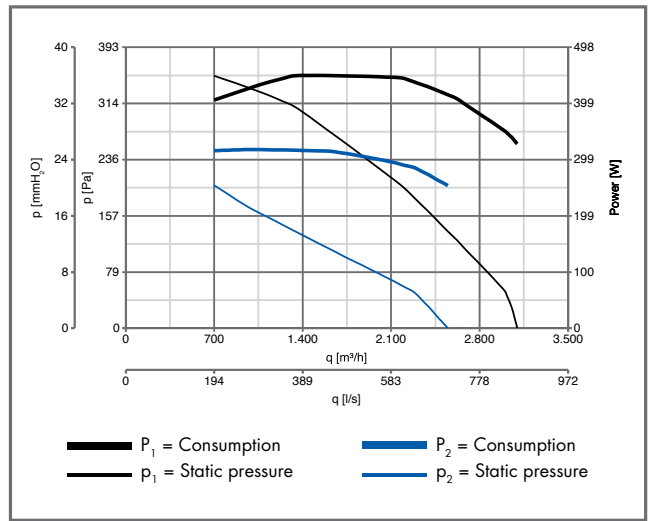


PERFORMANCE CURVES

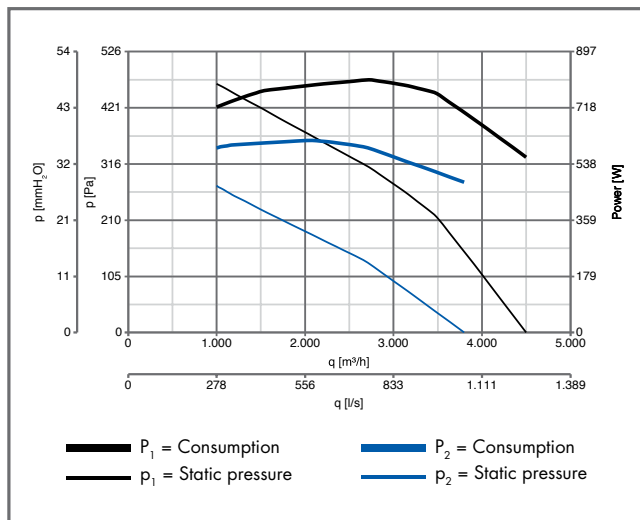
CODE 15165 TORRETTE TRT 20 ED-V 4P



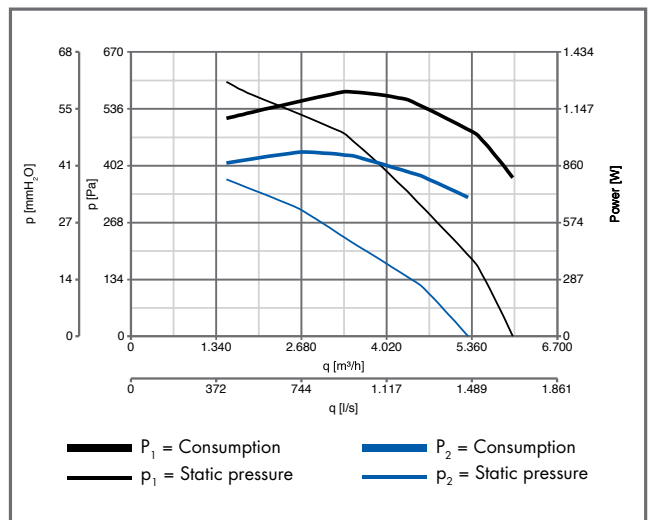
CODE 15167 TORRETTE TRT 30 ED-V 4P



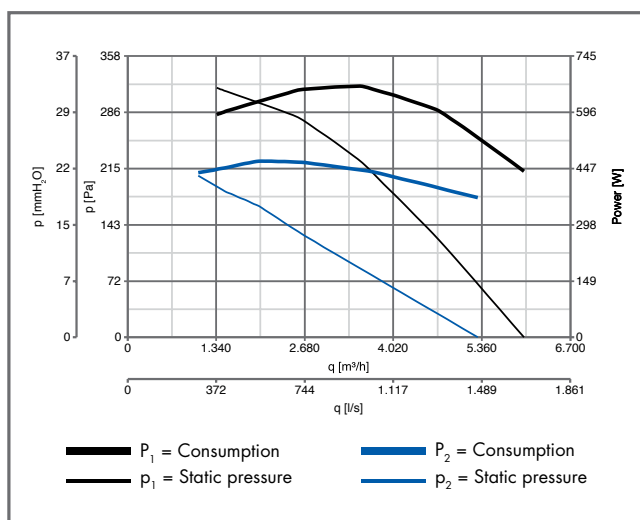
CODE 15169 TORRETTE TRT 50 ED-V 4P



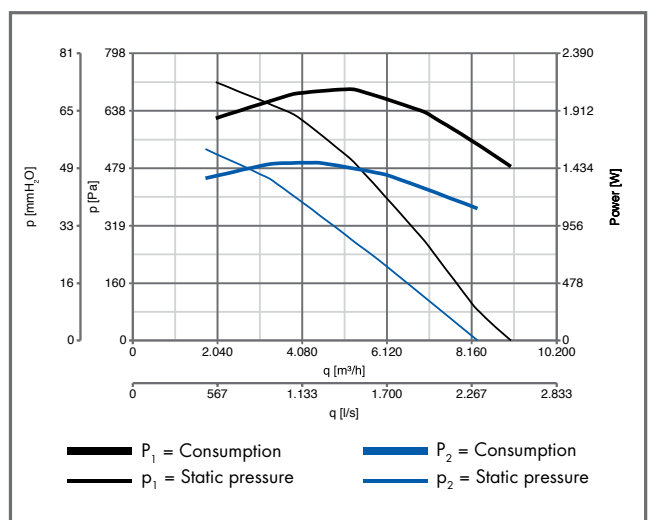
CODE 15171 TORRETTE TRT 70 ED-V 4P



CODE 15172 TORRETTE TRT 70 ED-V 6P

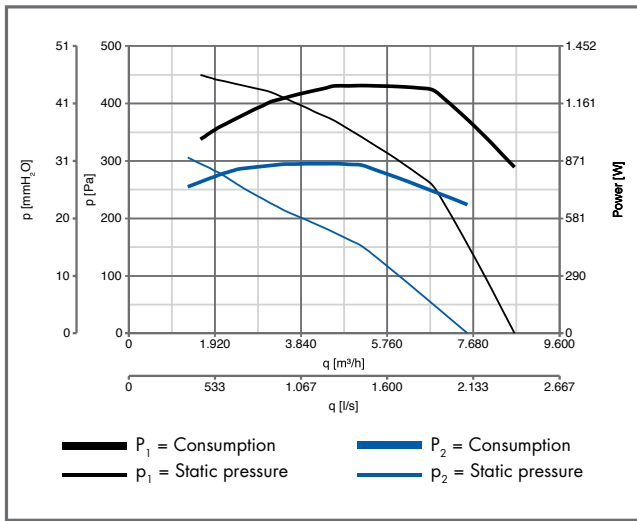


CODE 15173 TORRETTE TRT 100 ED-V 4P

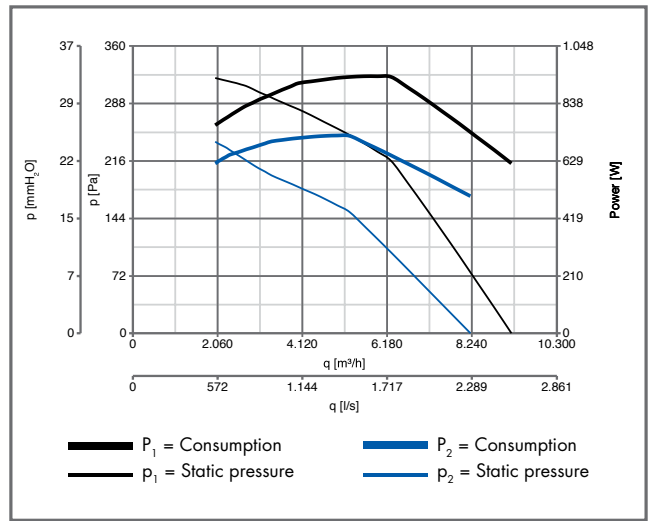


PERFORMANCE CURVES

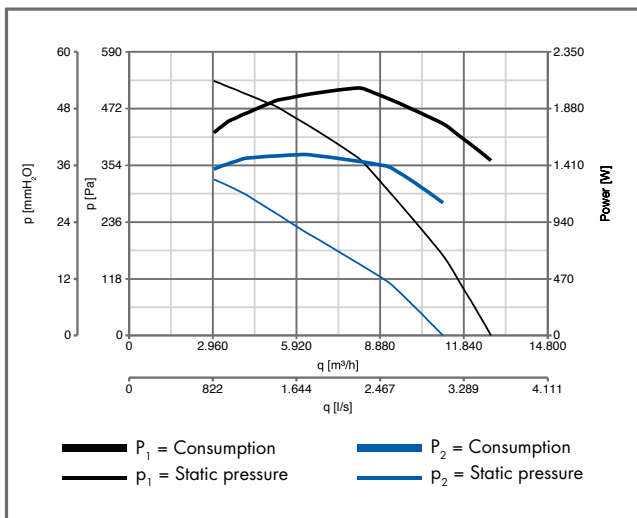
CODE 15174 TORRETTE TRT 100 ED-V 6P



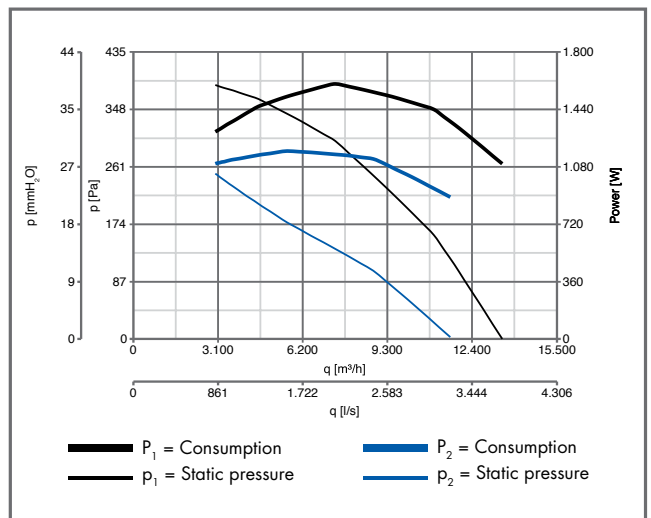
CODE 15175 TORRETTE TRT 100 ED-V 8P



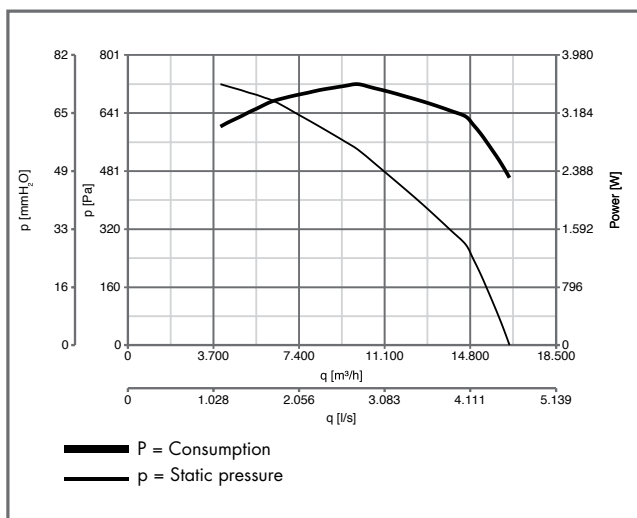
CODE 15176 TORRETTE TRT 150 ED-V 6P



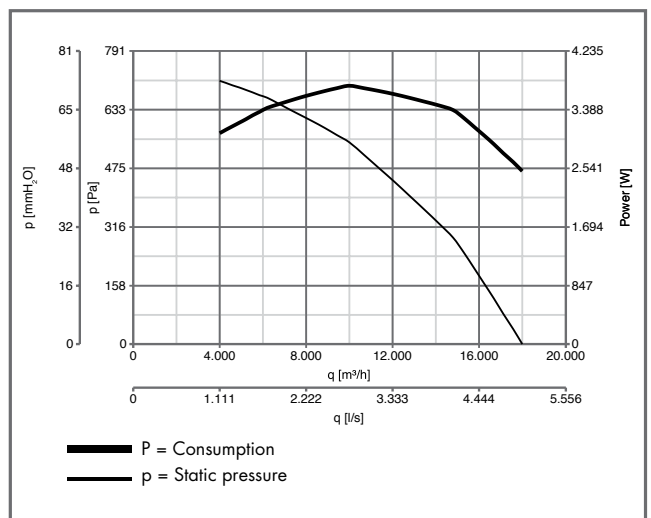
CODE 15177 TORRETTE TRT 150 ED-V 8P



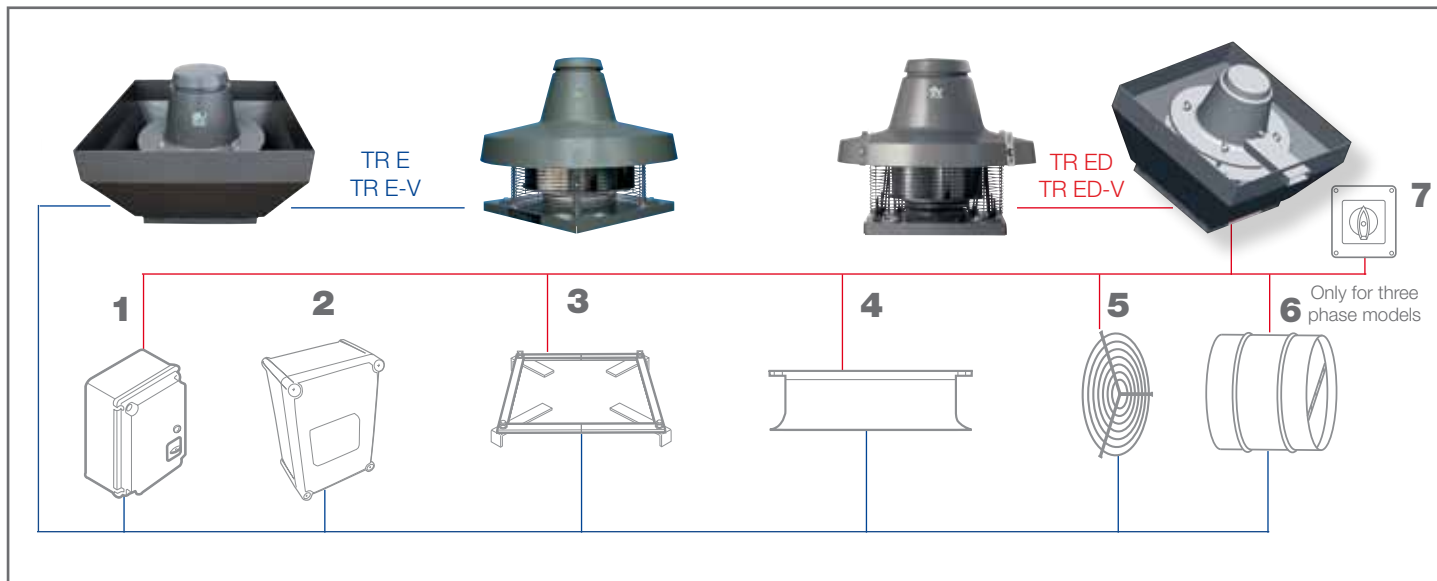
CODE 15178 TORRETTE TRT 180 ED-V 6P



CODE 15179 TORRETTE TRT 210 ED-V 6P



ACCESSORIES TORRETTE TR E, TR E-V, TR ED AND TR ED-V



	MODELS	Code	
1	SPEED REGULATOR		
	IRM 30	12921	
	IRM 40	12922	
	IRM 50	12928	
	IREM 3	12931	
	IREM 5	12932	
	IREM 9	12933	
	IRT 15	12923	
	IRT 35	12924	
	IRT 40	12927	
	IRET 6	12934	
	2	IREM INVERTER 1.4	12935
		IREM INVERTER 4.2	12936
IREM INVERTER 7		12937	
IRET INVERTER 1.2		12909	
IRET INVERTER 2.2		12925	
IRET INVERTER 5		12947	
IRET INVERTER 8		12989	
3	BASE COUNTERFRAME		
	TR-CU 10/15	22511	
	TR-CU 20/30/50	22512	
	TR-CU 70/100-4P	22539	
	TR-CU 100/150/180/180/210 6-8P	22540	
4	SUCTION NOZZLE		
	TR-B 10/15	22600	
	TR-B 20/30/50	22610	
	TR-B 70/100-4P	22508	
	TR-B 100/150/180/210 6-8P	22509	

	MODELS	Code
5	PROTECTIVE GRILLE	
	TR-G 10/15	22700
	TR-G 20/30/50	22710
	TR-G 70/100-4P	22506
	TR-G 100/150/180/210 6-8P	22507
6	BACKDRAUGHT SHUTTER	
	TR-S 10/15	22500
	TR-S 20/30/50	22510
	TR-S 70/100-4P	22541
	TR-S 100/150/180/210 6-8P	22542
7	SPEED CONTROLLER	
	TR-CVT	22910

INVERTER SPEED CONTROLLERS

NEW

Suitable for three-phase models



THE ADVANTAGES OF SPEED CONTROLLERS IREM-IRET SERIES INVERTERS

Compared to conventional speed control devices, the VORTICE IREM/IRET series frequency variation controller INVERTERS allows the electric motor to operate within a wider range of values, controlling operation according to the performance required in each situation and avoiding the risk of overheating or harmonic distortions that could condition the mains electricity.

COMBINATION OF TORRETTE AND RELATIVE CONTROLLERS

MODELS				
TRM 10 E 4P TRM 10 E-V 4P	code 15115 code 15180	IRM 30 code 12921	IREM 3 code 12931	-
TRT 10 E 4P TRT 10 E-V 4P	code 15155 code 15181	IRT 15 code 12923	-	IREM INVERTER 1.4 code 12935 IRET INVERTER 1.2 code 12909
TRM 15 E 4P TRM 15 E-V 4P	code 15205 code 15182	IRM 30 code 12921	IREM 3 code 12931	-
TRT 15 E 4P TRT 15 E-V 4P	code 15255 code 15183	IRT 15 code 12923	-	IREM INVERTER 1.4 code 12935 IRET INVERTER 1.2 code 12909
TRM 20 E 4P TRM 20 E-V 4P	code 15216 code 15197	IRM 40 code 12922	IREM 3 code 12931	-
TRT 20 E 4P TRT 20 E-V 4P	code 15215 code 15184	IRT 15 code 12923	-	IREM INVERTER 1.4 code 12935 IRET INVERTER 1.2 code 12909
TRM 30 E 4P TRM 30 E-V 4P	code 15356 code 15198	IRM 40 code 12922	IREM 3 code 12931	-
TRT 30 E 4P TRT 30 E-V 4P	code 15355 code 15185	IRT 35 code 12924	-	IREM INVERTER 1.4 code 12935 IRET INVERTER 1.2 code 12909
TRM 50 E 4P TRM 50 E-V 4P	code 15556 code 15199	IRM 50 code 12928	IREM 5 code 12932	-
TRT 50 E 4P TRT 50 E-V 4P	code 15555 code 15186	IRT 35 code 12924	-	IREM INVERTER 4.2 code 12936 IRET INVERTER 2.2 code 12925
TRM 70 E 4P TRM 70 E-V 4P	code 15070 code 15188	-	IREM 5 code 12932	-
TRT 70 E 4P TRT 70 E-V 4P	code 15071 code 15187	IRT 40 code 12927	IRET 6 code 12934	IREM INVERTER 4.2 code 12936 IRET INVERTER 2.2 code 12925
TRT 70 E 6P TRT 70 E-V 6P	code 15072 code 15189	IRT 35 code 12924	IRET 6 code 12934	IREM INVERTER 4.2 code 12936 IRET INVERTER 2.2 code 12925
TRT 100 E 4P TRT 100 E-V 4P	code 15073 code 15190	-	-	IREM INVERTER 7 code 12937 IRET INVERTER 5 code 12947
TRT 100 E 6P TRT 100 E-V 6P	code 15074 code 15191	IRT 40 code 12927	IRET 6 code 12934	IREM INVERTER 4.2 code 12936 IRET INVERTER 2.2 code 12925
TRT 100 E 8P TRT 100 E-V 8P	code 15075 code 15192	IRT 35 code 12924	IRET 6 code 12934	IREM INVERTER 4.2 code 12936 IRET INVERTER 2.2 code 12925
TRT 150 E 6P TRT 150 E-V 6P	code 15076 code 15193	-	IRET 6 code 12934	IREM INVERTER 7 code 12937 IRET INVERTER 5 code 12947
TRT 150 E 8P TRT 150 E-V 8P	code 15077 code 15194	-	IRET 6 code 12934	IREM INVERTER 7 code 12937 IRET INVERTER 5 code 12947
TRT 180 E 6P TRT 180 E-V 6P	code 15078 code 15195	-	-	IRET INVERTER 8 code 12989
TRT 210 E 6P TRT 210 E-V 6P	code 15079 code 15196	-	-	IRET INVERTER 8 code 12989

Code 5.170.084.255

04/12

Vortice Elettrosociali S.p.A
Strada Cerca, 2
Frazione di Zoate
20067 Tribiano (Milano)
Tel. (+39) 02.906991
Fax (+39) 02.90699314
Italia
www.vortice-export.com
export@vortice-italy.com

Vortice France
15-33, Rue Le Corbusier
CS 30007
94046 Créteil Cedex
Tél. (+33) 1.55.12.50.00
Fax (+33) 1.55.12.50.01
France
www.vortice-france.com
contact@vortice-france.com

Vortice Limited
Beeches House-Eastern Avenue
Burton on Trent
DE13 0BB
Tel. (+44) 1283.49.29.49
Fax (+44) 1283.54.41.21
United Kingdom
www.vortice.ltd.uk
sales@vortice.ltd.uk

